

IntelliStripe 70

HYBRID INSERTION READER

TECHNICAL REFERENCE MANUAL

Part Number 99875254-4

APRIL 2009

MAGTEK[®]

REGISTERED TO ISO 9001:2000

1710 Apollo Court

Seal Beach, CA 90740

Phone: (562) 546-6400

FAX: (562) 546-6301

Technical Support: (651) 415-6800

www.magtek.com

Information in this document is subject to change without notice. No part of this document may be reproduced or transmitted in any form or by any means, electronic or mechanical, for any purpose, without the express written permission of MagTek, Inc.

MagTek is a registered trademark of MagTek, Inc.

IntelliStripe is a registered trademark of MagTek, Inc.

REVISIONS

Rev Number	Date	Notes
1	31 Mar 03	Initial Release
2	13 Jun 03	Removed TTL throughout; Front Matter: added ISO line to logo, changed Tech Support phone number, added new warranty statement, added new Fig 1-1; Sec 1: Removed TTL, added chassis only, added design meets EMV Level 1, added P/N 21170009 to configurations, added in Standard Features: offered unit without mounting posts, changed Specifications operating temperature to “-25 °C to 70 C°”, changed height dimensions to reflect latest engineering changes.
3	17 Oct 05	Front Matter: Updated Limited Warranty. Sec 1: Added to or changed in Table 1-1: Part numbers 21170001, -02, -03, -04, -05, -06, -07, -08, -09, and -10; Table 1-2: editorial corrections; Figure 1-2: corrected values. Sec 2: on Figs 2-2, 2-3, and 2-4 corrected values.
4	3 Apr 09	Removed dimensioned drawings from section 2 and added engineering drawings to Appendix A

LIMITED WARRANTY

MagTek warrants that the products sold pursuant to this Agreement will perform in accordance with MagTek's published specifications. This warranty shall be provided only for a period of one year from the date of the shipment of the product from MagTek (the "Warranty Period"). This warranty shall apply only to the "Buyer" (the original purchaser, unless that entity resells the product as authorized by MagTek, in which event this warranty shall apply only to the first repurchaser).

During the Warranty Period, should this product fail to conform to MagTek's specifications, MagTek will, at its option, repair or replace this product at no additional charge except as set forth below. Repair parts and replacement products will be furnished on an exchange basis and will be either reconditioned or new. All replaced parts and products become the property of MagTek. This limited warranty does not include service to repair damage to the product resulting from accident, disaster, unreasonable use, misuse, abuse, negligence, or modification of the product not authorized by MagTek. MagTek reserves the right to examine the alleged defective goods to determine whether the warranty is applicable.

Without limiting the generality of the foregoing, MagTek specifically disclaims any liability or warranty for goods resold in other than MagTek's original packages, and for goods modified, altered, or treated without authorization by MagTek.

Service may be obtained by delivering the product during the warranty period to MagTek (1710 Apollo Court, Seal Beach, CA 90740). If this product is delivered by mail or by an equivalent shipping carrier, the customer agrees to insure the product or assume the risk of loss or damage in transit, to prepay shipping charges to the warranty service location, and to use the original shipping container or equivalent. MagTek will return the product, prepaid, via a three (3) day shipping service. A Return Material Authorization ("RMA") number must accompany all returns. Buyers may obtain an RMA number by contacting Technical Support at (888) 624-8350.

EACH BUYER UNDERSTANDS THAT THIS MAGTEK PRODUCT IS OFFERED AS IS. MAGTEK MAKES NO OTHER WARRANTY, EXPRESS OR IMPLIED, AND MAGTEK DISCLAIMS ANY WARRANTY OF ANY OTHER KIND, INCLUDING ANY WARRANTY OF MERCHANTABILITY OR FITNESS FOR A PARTICULAR PURPOSE.

IF THIS PRODUCT DOES NOT CONFORM TO MAGTEK'S SPECIFICATIONS, THE SOLE REMEDY SHALL BE REPAIR OR REPLACEMENT AS PROVIDED ABOVE. MAGTEK'S LIABILITY, IF ANY, SHALL IN NO EVENT EXCEED THE TOTAL AMOUNT PAID TO MAGTEK UNDER THIS AGREEMENT. IN NO EVENT WILL MAGTEK BE LIABLE TO THE BUYER FOR ANY DAMAGES, INCLUDING ANY LOST PROFITS, LOST SAVINGS, OR OTHER INCIDENTAL OR CONSEQUENTIAL DAMAGES ARISING OUT OF THE USE OF, OR INABILITY TO USE, SUCH PRODUCT, EVEN IF MAGTEK HAS BEEN ADVISED OF THE POSSIBILITY OF SUCH DAMAGES, OR FOR ANY CLAIM BY ANY OTHER PARTY.

LIMITATION ON LIABILITY

EXCEPT AS PROVIDED IN THE SECTIONS RELATING TO MAGTEK'S LIMITED WARRANTY, MAGTEK'S LIABILITY UNDER THIS AGREEMENT IS LIMITED TO THE CONTRACT PRICE OF THIS PRODUCT.

MAGTEK MAKES NO OTHER WARRANTIES WITH RESPECT TO THE PRODUCT, EXPRESSED OR IMPLIED, EXCEPT AS MAY BE STATED IN THIS AGREEMENT, AND MAGTEK DISCLAIMS ANY IMPLIED WARRANTY, INCLUDING WITHOUT LIMITATION ANY IMPLIED WARRANTY OF MERCHANTABILITY OR FITNESS FOR A PARTICULAR PURPOSE.

MAGTEK SHALL NOT BE LIABLE FOR CONTINGENT, INCIDENTAL, OR CONSEQUENTIAL DAMAGES TO PERSONS OR PROPERTY. MAGTEK FURTHER LIMITS ITS LIABILITY OF ANY KIND WITH RESPECT TO THE PRODUCT, INCLUDING ANY NEGLIGENCE ON ITS PART, TO THE CONTRACT PRICE FOR THE GOODS.

MAGTEK'S SOLE LIABILITY AND BUYER'S EXCLUSIVE REMEDIES ARE STATED IN THIS SECTION AND IN THE SECTION RELATING TO MAGTEK'S LIMITED WARRANTY.

UL/CSA

This product is recognized per Underwriter Laboratories and Canadian Underwriter Laboratories 1950.

TABLE OF CONTENTS

SECTION 1. FEATURES AND SPECIFICATIONS	1
CONFIGURATIONS	1
STANDARD FEATURES.....	2
OPTION	2
RELATED DOCUMENTS	2
SPECIFICATIONS.....	3
SECTION 2. INSTALLATION	5
COMPONENTS	5
Card Seated Switch	7
MECHANICAL MOUNTING	7
Side Mounting Pins.....	7
Side Mounting Slots.....	7
PCB MOUNTING POSTS.....	7
SMART CARD CONNECTOR.....	7
Flex Pin Dimensions	9
Head Pin Connector	9
APPENDIX A. ENGINEERING DRAWINGS	11

TABLES and FIGURES

Figure 1-1. IntelliStripe 70, Hybrid Insertion Reader	vi
Table 1-1. Part Numbers, Configurations, and Tracks.....	1
Table 1-2. Specifications	3
Figure 2-1. Components of the IntelliStripe 70.....	6
Table 2-1. Pin List for Flex Cable	8
Figure 2-2. Pin Orientation - Flex Cable Side of Smartcard Connector	8
Figure 2-3. Flex Pin Dimensions and Mating Connector	9
Figure 2-4. Head Pin Connector	9
Table 2-2. 3-Track Head Pin Listing.....	9
Table 2-3. Track 2, 3 Head Pin Listing.....	10
Table 2-4. Track 1, 2 Head Pin Listing.....	10
Figure A-1 Bottom Chassis Dimensions 1	12
Figure A-2 Bottom Chassis Dimensions 2	13
Figure A-3 Top Chassis Dimensions 1.....	14
Figure A-3 Top Chassis Dimensions 2.....	15

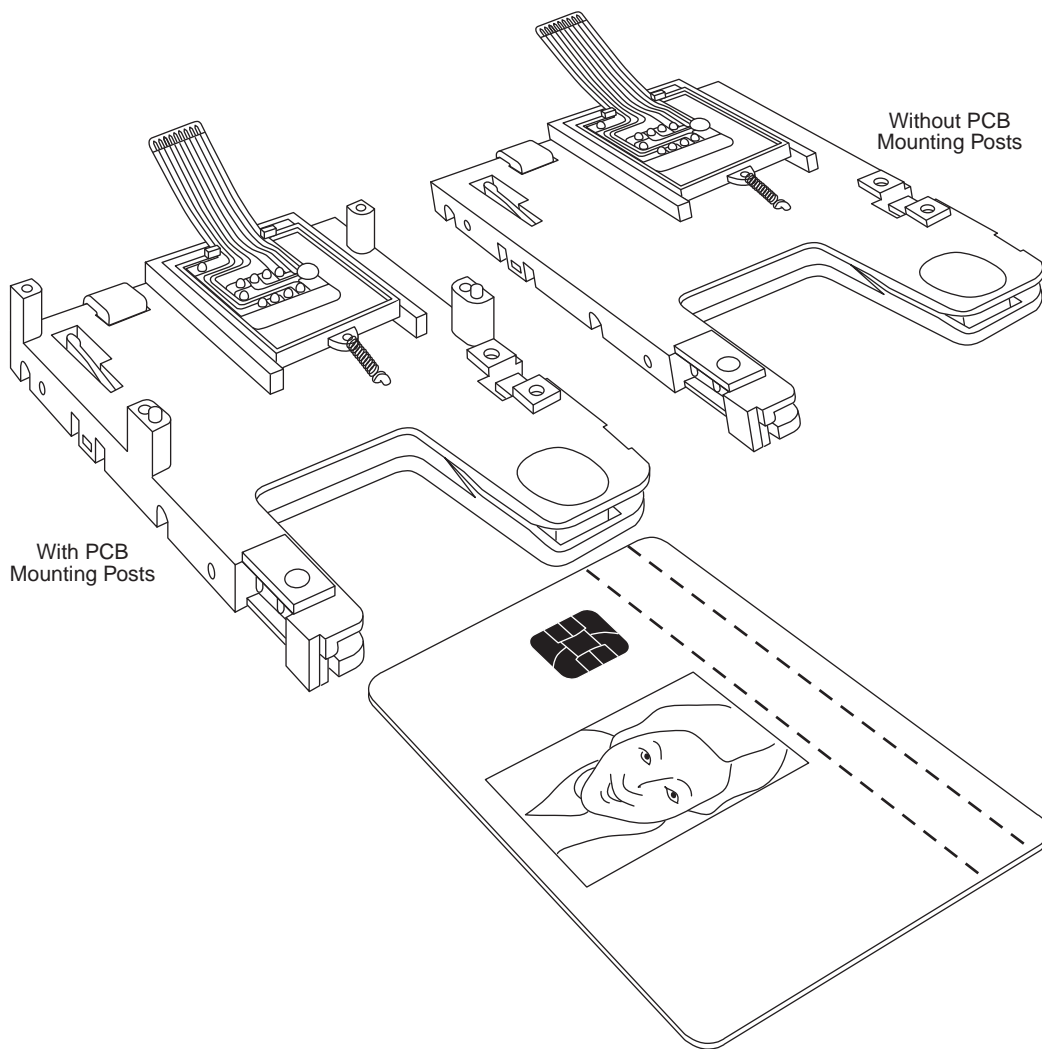


Figure 1-1. IntelliStripe 70, Hybrid Insertion Reader

SECTION 1. FEATURES AND SPECIFICATIONS

The IntelliStripe 70 is a chassis-only hybrid insertion reader, which provides magstripe and smartcard functionality. The chassis is not equipped with electronics, which are required to complete the magstripe and smartcard interfaces.

The reader features a low-profile mechanical footprint which is ideally suited for integration into POS terminals, payphones, vending machines, kiosks, and fuel pumps.

CONFIGURATIONS

The part numbers, configurations, and tracks for the IntelliStripe 70 Hybrid Insertion Reader are shown in Table 1-1.

Table 1-1. Part Numbers, Configurations, and Tracks

Part Number	Configuration	Track Numbers
21170001	No side pins or flange, 8 SC contacts	1 & 2
21170002	Side pins, 8 SC contacts	2 & 3
21170003	Side pins, 8 SC contacts	1, 2, 3
21170004	No side pins or flange, 8 SC contacts	2 & 3
21170005	No side pins or flange, 8 SC contacts	1, 2, 3
21170006	No side pins, with extended flex cable	1, 2, 3
21170007	Side pins, 8 SC contacts	1 & 2
21170008	Side pins, 8 SC contacts with extended flex cable	1, 2, 3
21170009	No side pins, no PCB posts, 8 SC contacts with extended flex cable	1, 2, 3
21170010	No side pins, no PCB Posts, 8 SC contacts with extended flex cable, no head pin cap	1, 2, 3
21170012	Side pins, 8 SC contacts with extended flex cable; Shift-Out IntelliHead	1, 2, 3

STANDARD FEATURES

Standard features of the IntelliStripe 70 are as follows:

The product will provide the following features:

- Compact mechanical footprint. Ideally suited for use with POS terminals
- For low profile application, chassis is offered with no PCB mounting posts
- Ability to support “No Pin” and “Side Pin” mounting options
- Chassis and smartcard contacts design meet EMV Level 1 electro-mechanical requirements
- ISO 7816 8-contact smartcard connector with flex cable
- Landing switch on smartcard connector. (Detects card at rear/ landed)
- Spring-loaded side arm to hold the card securely in the smartcard position
- 2-track (track 1&2 and track 2&3) and 3-track magnetic stripe reading, using low profile 2-track and 3-track head-beam assemblies
- Beam mounted read head (Provides superior tracking of bowed or warped cards)
- Chassis Manufactured from polycarbonate glass-filled material and ABS.
- “Card flattening” feature, which ensures that bowed cards are funneled towards the smartcard contacts

OPTION

The following option may be selected: Mag-stripe can be configured to support all popular track combinations.

RELATED DOCUMENTS

The IntelliStripe 70, Hybrid Insertion Reader will read cards that meet the standards defined by ISO (International Standards Organization):

- ISO 7816 - Identification Cards – Integrated circuits with contacts
- ISO 7811 - Identification Cards – Mag-stripe Cards, Tracks 1-3
- ISO 7810 - Identification Cards – Physical Specifications (ID-1 Cards)

SPECIFICATIONS

The specifications of the Reader are listed in Table 1-2. The overall dimensions are shown in Appendix A.

Table 1-2. Specifications

DATA FORMAT SPECIFICATIONS	
Reader Configuration	Data Format Specifications*
Track 1,2	ISO/ANSI/AAMVA/210bpi on TK2 formats
Track 2,3	ISO/ANSI/AAMVA formats
Track 1,2,3	ISO/ANSI/AAMVA formats
* ISO (International Standards Organization), ANSI (American National Standards Institute), AAMVA, (American Association of Motor Vehicle Administrators)	
OPERATIONAL	
Card Speed:	3 IPS (7.62cm/sec) to 50 IPS (127cm/sec)
Recording Method	Two-frequency coherent phase (F2F)
ELECTRICAL	
Voltage	Not Applicable
Current	Not Applicable
MECHANICAL	
Dimensions (no side pins)	
Depth	103.8 mm (4.1")
Width	65.8 mm (2.59")
Height	21.8 mm (0.86")
Dimensions (side pins)	
Depth	103.8 mm (4.1")
Width	73.7 mm (2.9")
Height	21.8 mm (0.86")
Dimensions (No PCB Posts)	
Height	18.5 mm (0.729")
Weight:	45.3 g (1.6 oz)
ENVIRONMENTAL	
Temperature	
Operating:	-25 °C to 70 °C (-13 °F to 158 °F)
Storage:	-40 °C to 70 °C (-40 °F to 158 °F)
Humidity	
Operating:	10% to 95% noncondensing
Storage:	10% to 95% noncondensing
Altitude	
Operating:	0-10,000 ft. (0-3,048 m.)
Storage:	0-50,000 ft. (0-15,240 m.)

SECTION 2. INSTALLATION

The Installation of the IntelliStripe 70 Hybrid Insertion Reader includes mechanical and electrical connections.

COMPONENTS

The components of the IntelliStripe 70 are shown and Figure 2-1.

IntelliStripe 70 Hybrid Insertion Reader

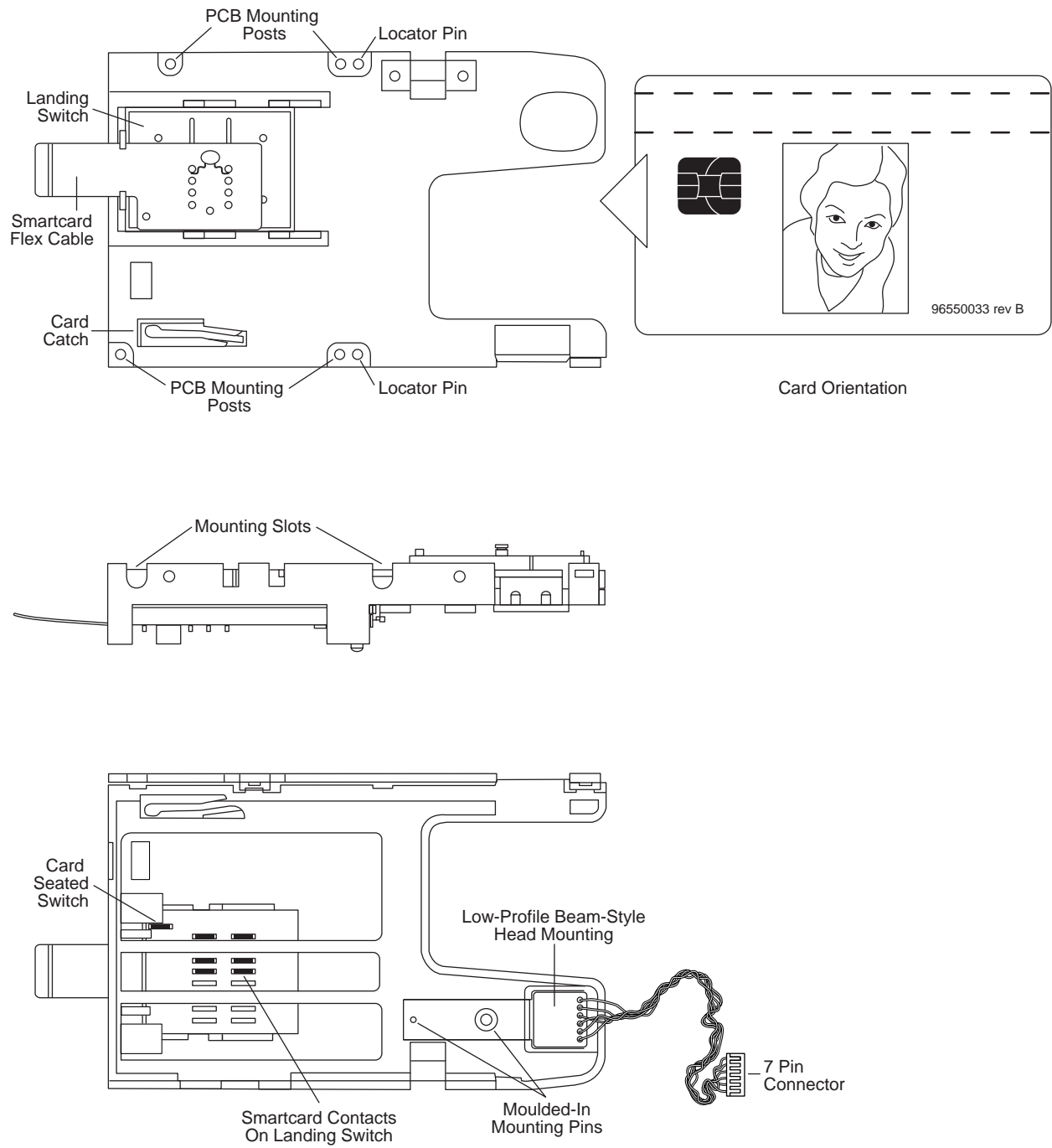


Figure 2-1. Components of the IntelliStripe 70

Card Seated Switch

A Card-Seated switch is operated when a card is fully inserted into the Reader (card is at the fully rearward position). The Card-Seated switch is an integral feature of the Smartcard Connector Block and detects when the card has properly “landed” (seated) on the smartcard contacts. The card-seated signal at the interface I/O connector is normally open and is grounded when the card is fully inserted into the Reader.

On insertion of the card, there may be some spurious transitions (mechanical switch bounce) at the Card Seated output, which do not exceed 4 ms. These transitions occur before the ICC chip contacts stabilize (stable contact with ICC pads) within a maximum of 40 ms from the stable state of the Card Seated output.

The first transition from the Card Seated output on withdrawal of the card is guaranteed to occur 1 ms before the ICC contacts lift. During the period between the two events, the contact resistance can increase to (but not exceed) 100 ohms for C1, C5, and C8 contacts, and 500 ohms for C2, C3, C4, and C8 contacts. For C7 the limit is 700 ohms.

Subsequent to the first transition from the Card Seated sensor, there can be additional transitions because of the mechanical bounce of the Card Seated switch contacts.

MECHANICAL MOUNTING

Mounting options for the Reader are as follows:

- Side Mounting Pins
- Side Mounting Slots

Side Mounting Pins

There are four molded pins; two are located on each side of the chassis. The holes are for M3 or #4 self-tapping screws. Dimensions for mounting with pins are shown in Appendix A.

Side Mounting Slots

Four molded slots are available when pins are not provided. Dimensions for mounting with slots are shown in Appendix A.

PCB MOUNTING POSTS

The PCB Mounting Posts are located on the upper side of the Reader. Mounting Posts may be used for chassis or PCB mounting. The Posts are designed to accept M3 or #4 self-tapping screws torqued to 4.0 in-lbs.

SMART CARD CONNECTOR

The IntelliStripe 70 contains a 10-pin smartcard connector with switch, which connects to the user’s PCB assembly through a flex cable. The location of the flex cable is shown in previous illustrations and identified in Figure 2-1.

Table 2-1 lists the I/O Flex Cable pin numbers, Signal names, and the I/O direction with respect to the Reader (IN is in to the Reader, and OUT is out of the Reader). Figure 2-2 shows the pin orientation of the flex cable. Pins are numbered from 1 to 10 as indicated in the illustration.

Table 2-1. Pin List for Flex Cable

Pin Number	Signal Name	I/O Direction
1	Card Seated*	OUT
2	ICC-C8	Undefined**
3	ICC-C7 Data	IN/OUT
4	ICC-C6 Programmable Power	IN
5	ICC-C1 Power	IN
6	ICC-C2 Reset	IN
7	ICC-C5 Ground	IN
8	ICC-C3 Clock	IN
9	ICC-C5 Ground	IN
10	ICC-C4	Undefined**

* Card Seated (Pin 1) is a normally-open switch, which connects to Gnd when closed. The user design may need to provide an external pull-up resistor.

** Signals ICC-C8 and -C4 (pins 2 and 10) are undefined by ISO 7816. These contacts are often used with non-ISO memory-type cards.

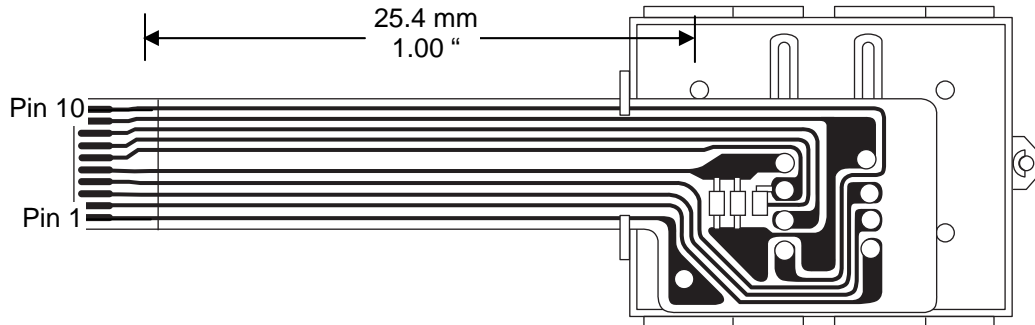


Figure 2-2. Pin Orientation - Flex Cable Side of Smartcard Connector

Flex Pin Dimensions

Dimensions for the flex cable are shown in Figure 2-3.

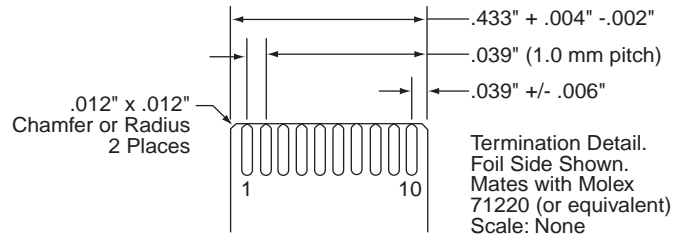


Figure 2-3. Flex Pin Dimensions and Mating Connector

Head Pin Connector

The connector for the head pins is shown in Figure 2-4. The pin listings are shown in Table 2-2, -3, and -4.

The mating connector is Molex 53048-0710.

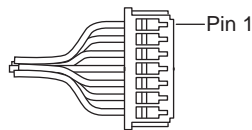


Figure 2-4. Head Pin Connector

Table 2-2. 3-Track Head Pin Listing

Pin	Signal	Color
1	TK 1	Red
2	TK 1	Red
3	TK 2	Green
4	TK 2	Green
5	TK 3	Yellow
6	TK 3	Yellow
7	Gnd	Black

Table 2-3. Track 2, 3 Head Pin Listing

Pin	Signal	Color
1	NC	
2	NC	
3	TK 2	Green
4	TK 2	Green
5	TK 3	Yellow
6	TK 3	Yellow
7	Gnd	Black

Table 2-4. Track 1, 2 Head Pin Listing

Pin	Signal	Color
1	TK1	Red
2	TK1	Red
3	TK 2	Green
4	TK 2	Green
5	NC	
6	NC	
7	Gnd	Black

APPENDIX A. ENGINEERING DRAWINGS

Figures A-1 and A-2: Show dimensions for the bottom half of the IntelliStripe 70 chassis

Figures A-3 and A-4: Show dimensions for the top half of the IntelliStripe 70 chassis

IntelliStripe 70 Hybrid Insertion Reader

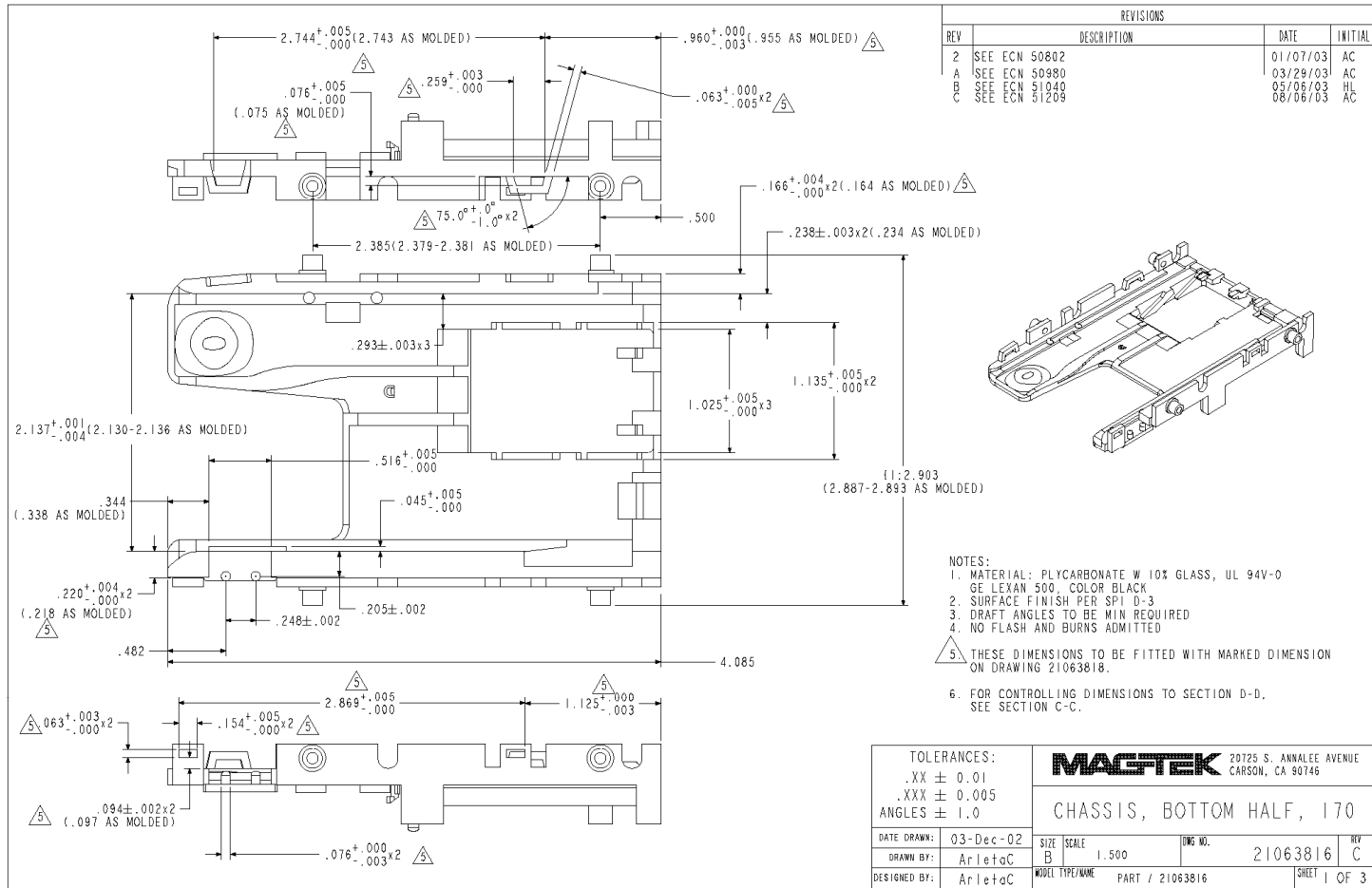


Figure A-1 Bottom Chassis Dimensions 1

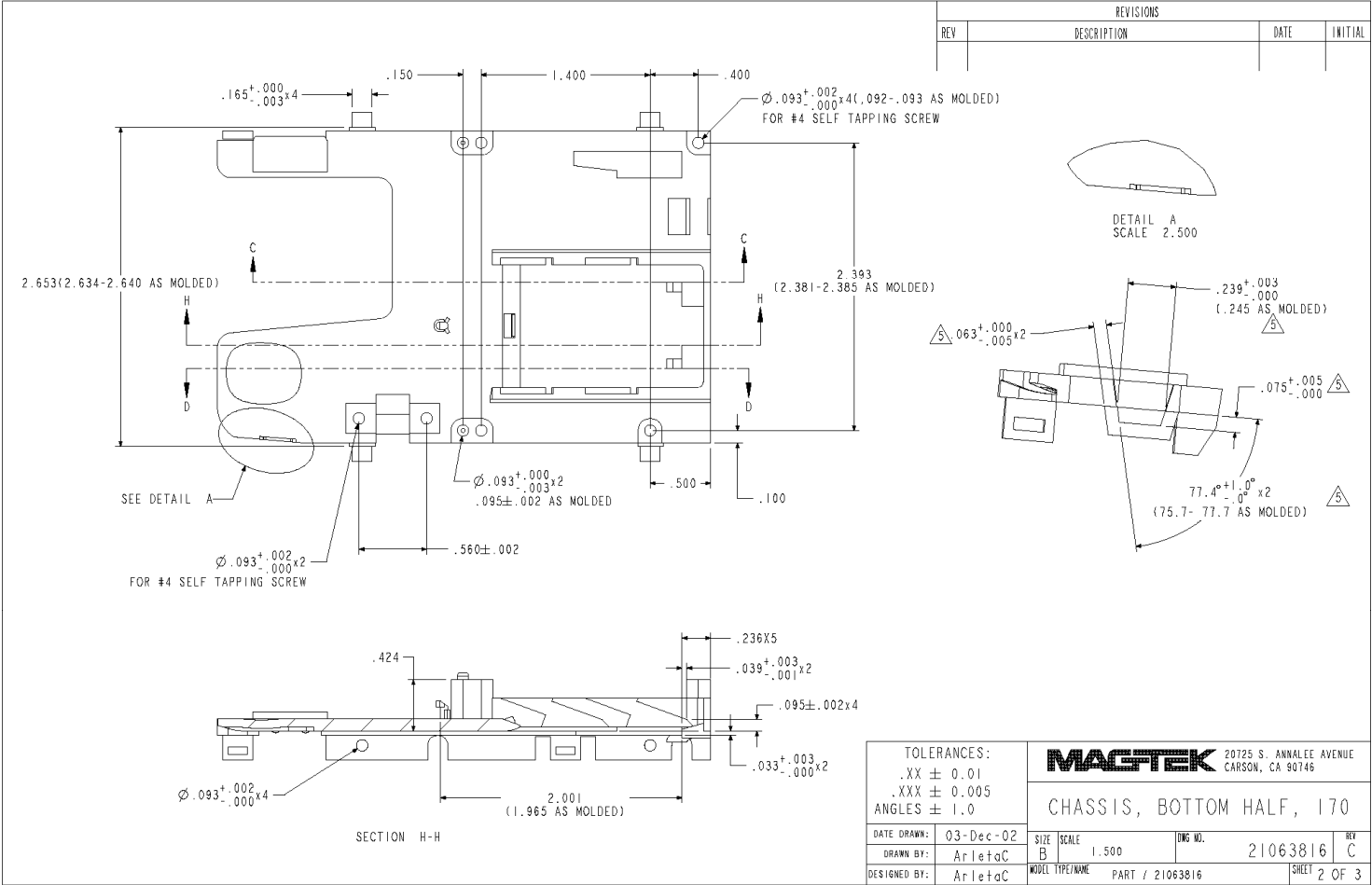


Figure A-2 Bottom Chassis Dimensions 2

IntelliStripe 70 Hybrid Insertion Reader

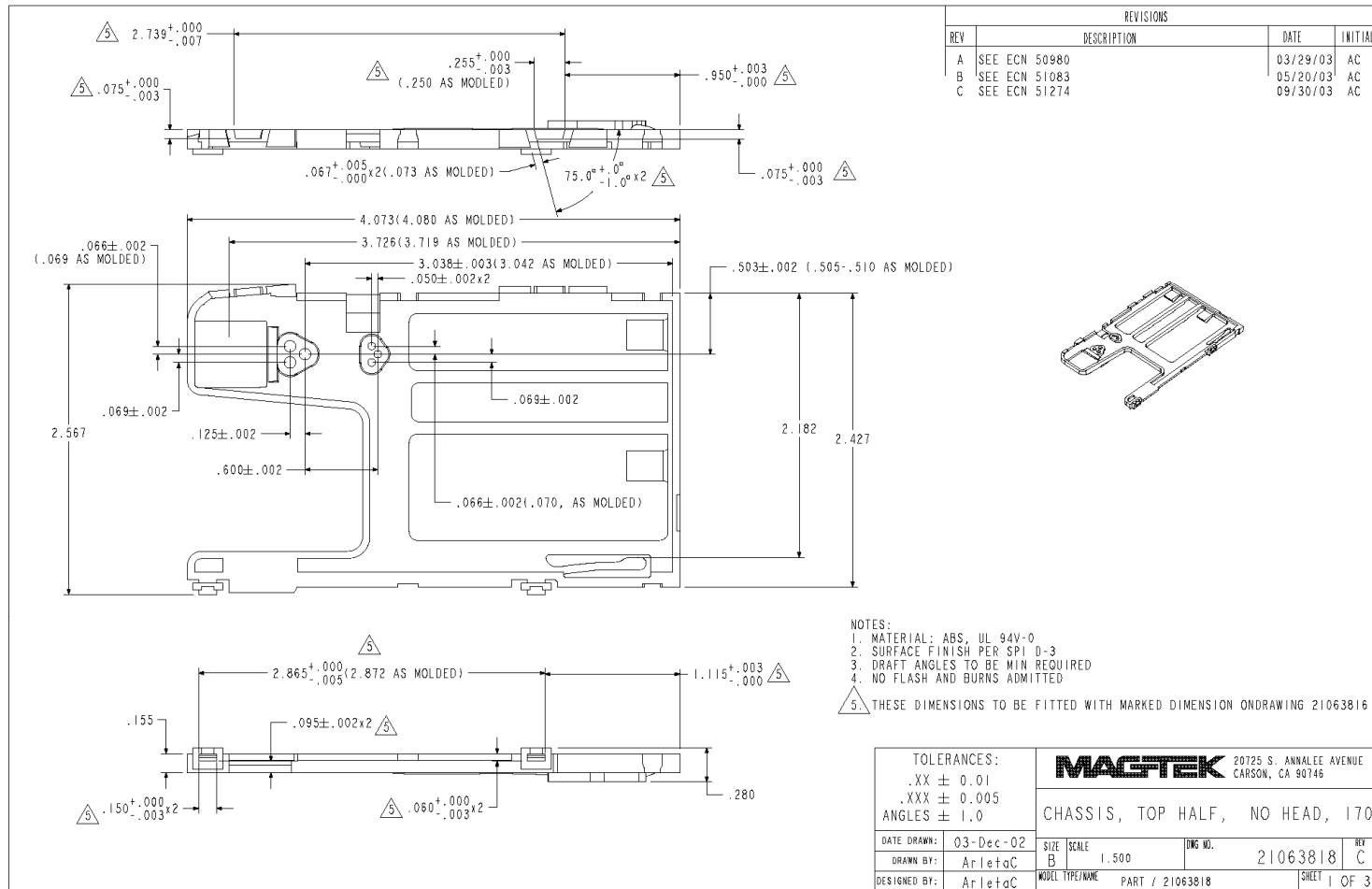


Figure A-3 Top Chassis Dimensions 1

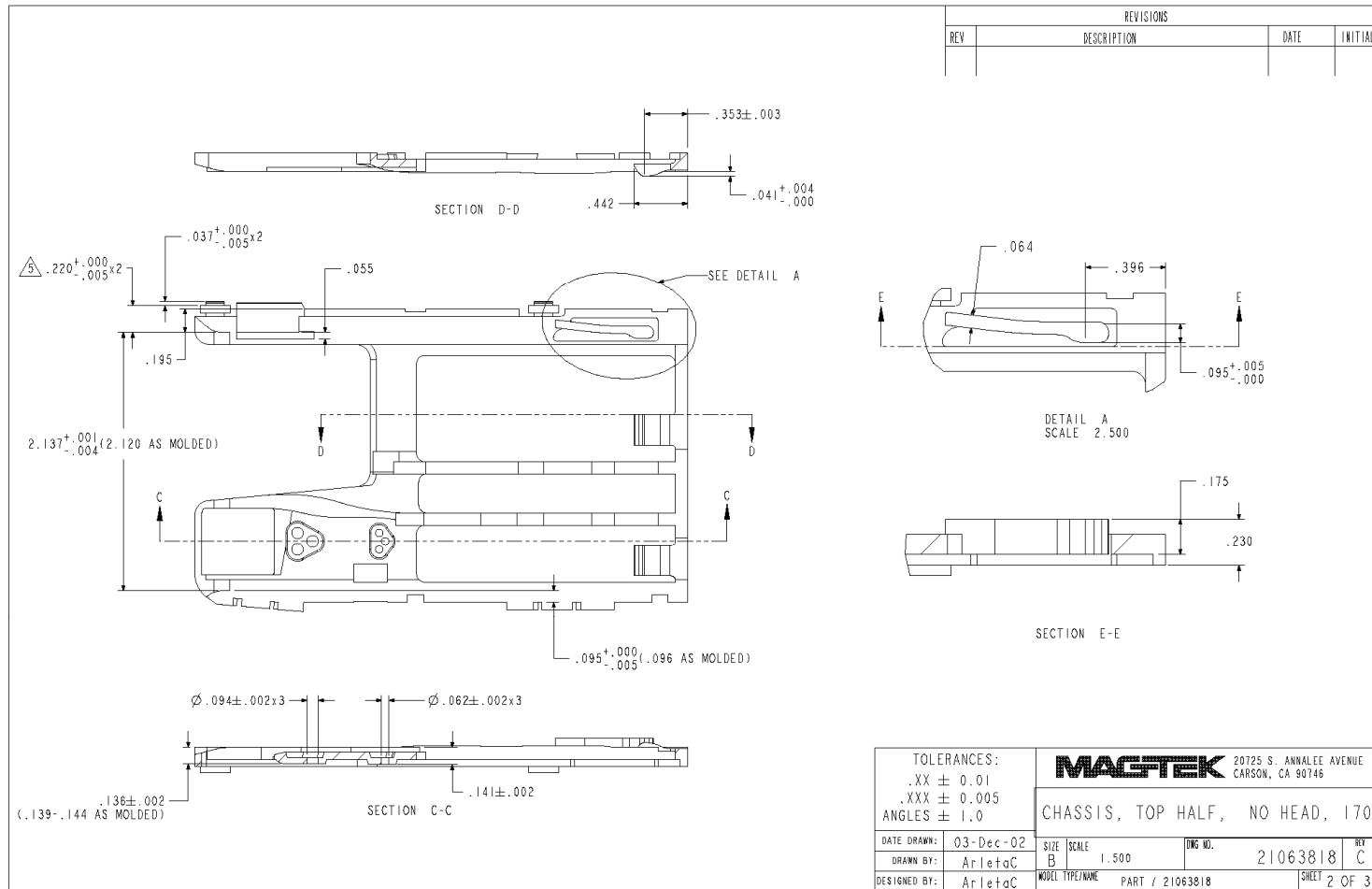


Figure A-3 Top Chassis Dimensions 2