

Quick Installation Guide

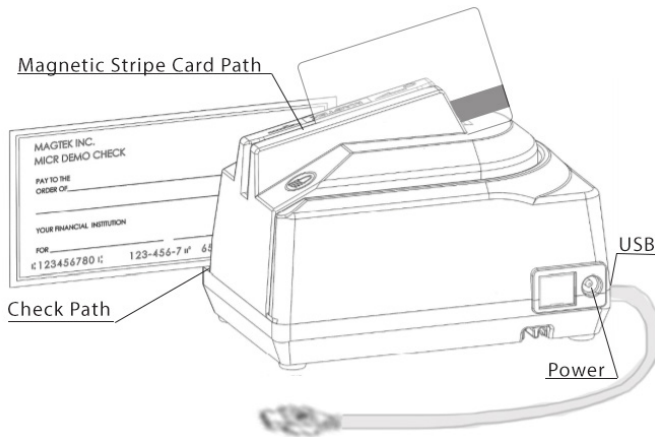
Setup and Installation

This document provides information about using the MagTek® MICRSafe small document scanner that is driven by your application. For detailed information and device manuals, please visit MagTek support: www.magtek.com/support.

Product Description

Optimized to reduce transaction time and manual entry errors, the MICRSafe is a single-feed MICR reader with a reliable and durable design. Ideal for retail applications where fast and accurate MICR reading is required, the MICRSafe offers a range of interface options, including connectivity to the most popular POS terminals. With a simple drop-and-push check feed movement, the MICRSafe significantly speeds check verification and conversion.

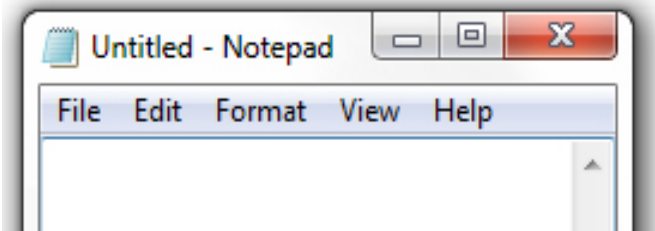
Major Components



Driver installation for HID/Keyboard Emulation unit

If you are using the HID device, the standard HID and Keyboard drivers that come with an operating system are usually all that is needed. HID version is the same as keyboard emulation and relies on the computer for the driver. The first time the device is connected to the PC, Windows needs to install the USB driver.

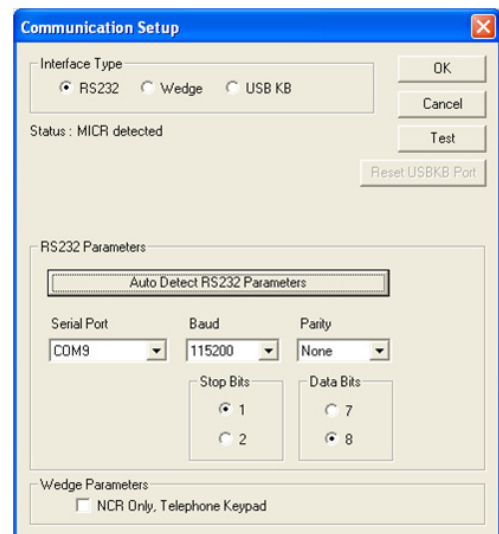
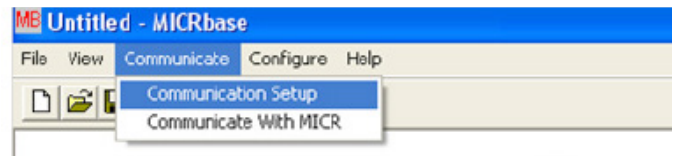
1. Connect the provided power supply into an outlet and plug other end into the MICRSafe unit.
2. Connect the communication cable to the unit, then plug the unit into the computer.
3. Wait for "Installing new device" balloon to close or indicate "Your hardware is installed and ready to use."
4. To test the reader simply open any text editor program and run check through or swipe a card. For example, Notepad.



VCOM and MICRbase driver installation

If you requested that the factory configure your MICRSafe device(s) to use a VCOM port, you would need to download the VCOM driver from the MagTek website. This driver allows a USB device such as MICRSafe to appear as an additional COM port available to the PC, enabling application software to access the USB device as if it were connected via a standard COM (RS-232) port.

1. Install VCOM software/driver for VCOM models
 - Install VCOM driver from MagTek website: <https://www.magtek.com/support/micrsafe?tab=software>
 - Select > Virtual Com Port - PN99510094 - v106
 - Select Run> browse> C:\ click OK
 - Type in MTSTDUVC after the c:\ so it creates this folder
 - Select unzip> install will write to C:\MTSTDUVC, Select OK
 - Go to C:\MTSTDUVC and select Win 7 8 8.1 or Win 10 and 32bit or 64bit based on your operating system
 - Run "install.bat" to install
2. Connect the provided power supply into an outlet and plug the other end into the MICRSafe unit
3. Connect the communication cable to the unit, then plug the USB connector to the host
4. Install MICRbase software
 - Install MICRbase application from MagTek website: <https://www.magtek.com/Content/SoftwarePackages/99510075.zip>
 - Select Open> Browse> Select C:\ and add MICRbase after C:\ so it creates this folder
 - Select Extract all and the install will write to C:\MICRbase\
5. Open the MICRbase program in C:\MICRbase\MICRbase.exe
6. Click on "Communicate" -> "Communication Setup"



Use and Compliance

Commands

Some applications include a visual indication of whether the device is active or not. Contact your representative to learn where you can download your application.

MICR Read

Orient the check so the MICR line is down and the printed side faces the center of MICRSafe as shown in major components diagram. When MICRSafe detects a check is present, its motor turns on. Gently urge the check forward until the device engages with the check, then let go. MICRSafe transports the check around the check path and eject it through the other side.

Card Read

An operator can swipe a magnetic stripe card through the MSR in either direction, but the magnetic stripe must be oriented in only one direction as shown in major components diagram. The MSR is capable of reading ISO, AAMVA, and CDL encoded cards.

Visual and Auditory Cues

LED indicator conditions for check and card reading operations listed below. The LED indicator for check reading is located to the left of the slot where the check is first inserted for reading.

The LED indicator for card reading is located on the upper left side of the MSR rail.

Color	Meaning
off	Power off
Solid Green	Ready to read check or card
OFF to SOLID RED	Good read
FLASH RED/GREEN	Data sensor blocked (motor does not run)
FLASH RED	Motor sensor blocked (motor does not run)

CAUTION: If another keyboard is connected to the same host as this device and a key is pressed on the other keyboard while this device is transmitting, then the data transmitted by this device may get corrupted.

CAUTION: To avoid damaging the read head, only clean the card path with approved cleaning cards. DO NOT use liquid cleaning products or insert any other objects into the device.

CAUTION: Do not place MICRSafe within 6 inches of a computer monitor or power supply. These devices may cause undesirable interference with check reading operation.

Technical Support

When contacting the support team please have power to your reader and have the part number and serial number(s) available, contact support@magtek.com

Compliance

FCC INFORMATION

This device complies with Part 15 of the FCC Rules. Operation is subject to the following two conditions: (1) This device may not cause harmful interference, and (2) This device must accept any interference received, including interference that may cause undesired operation. Note: This equipment has been tested and found to comply with the limits for a Class B digital device, pursuant to part 15 of the FCC Rules. These limits are designed to provide reasonable protection against harmful interference in a residential installation. This equipment generates, uses and can radiate radio frequency energy and, if not installed and used in accordance with the instructions, may cause harmful interference to radio communications. However, there is no guarantee that interference will not occur in a particular installation. If this equipment does cause harmful interference to radio or television reception, which can be determined by turning the equipment off and on, the user is encouraged to try to correct the interference by one or more of the following measures:

- Reorient or relocate the receiving antenna.
- Increase the separation between the equipment and receiver.
- Connect the equipment into an outlet on a circuit different from that to which the receiver is connected.
- Consult the dealer or an experienced radio/TV technician for help.

Caution: Any changes or modifications not expressly approved by the party responsible for compliance could void the user's authority to operate this equipment.

CANADIAN DOC STATEMENT

This digital apparatus does not exceed the Class B limits for radio noise from digital apparatus set out in the Radio Interference Regulations of the Canadian Department of Communications.

Le présent appareil numérique n'émet pas de bruits radioélectriques dépassant les limites applicables aux appareils numériques de la classe B prescrites dans le Règlement sur le brouillage radioélectrique édicté par le ministère des Communications du Canada.

This Class B digital apparatus complies with Canadian ICES-003.

Cet appareil numérique de la classe B est conforme à la norme NMB-003 du Canada.

CE STANDARDS

Testing for compliance with CE requirements was performed by an independent laboratory. The unit under test was found compliant with standards established for Class B devices.

UL/CSA

This product is recognized per UL 60950-1, 2nd Edition, 2011-12-19 (Information Technology Equipment - Safety - Part 1: General Requirements), CSA C22.2 No. 60950-1-07, 2nd Edition, 2011-12 (Information Technology Equipment - Safety - Part 1: General Requirements).

ROHS STATEMENT

When ordered as RoHS compliant, this product meets the Electrical and Electronic Equipment (EEE) Reduction of Hazardous Substances (RoHS) European Directive 2002/95/EC. The marking is clearly recognizable, either as written words like "Pb-free," "lead-free," or as another clear symbol 