

Quick Installation Guide

DynaPro and DynaPro v3

PIN ENTRY DEVICES
SECURED BY THE MAGNESAFE™ SECURITY ARCHITECTURE

PLEASE HANDLE
DEVICE WITH CARE



Secure Cryptographic Device

Prevent card data breaches without compromising the speed and convenience of your cardholders' financial transactions with DynaPro and DynaPro v3.

See chart on reverse for device part number descriptions and capabilities.



PIN ENTRY DEVICE



MAGNETIC STRIPE



Chip card CHIP EMV
CONTACT L1 & L2



EMV CONTACTLESS
[OPTIONAL]



FULL COLOR
DISPLAY



SIGNATURE CAPTURE
[OPTIONAL]



MAGNESAFE™
SECURITY ARCHITECTURE



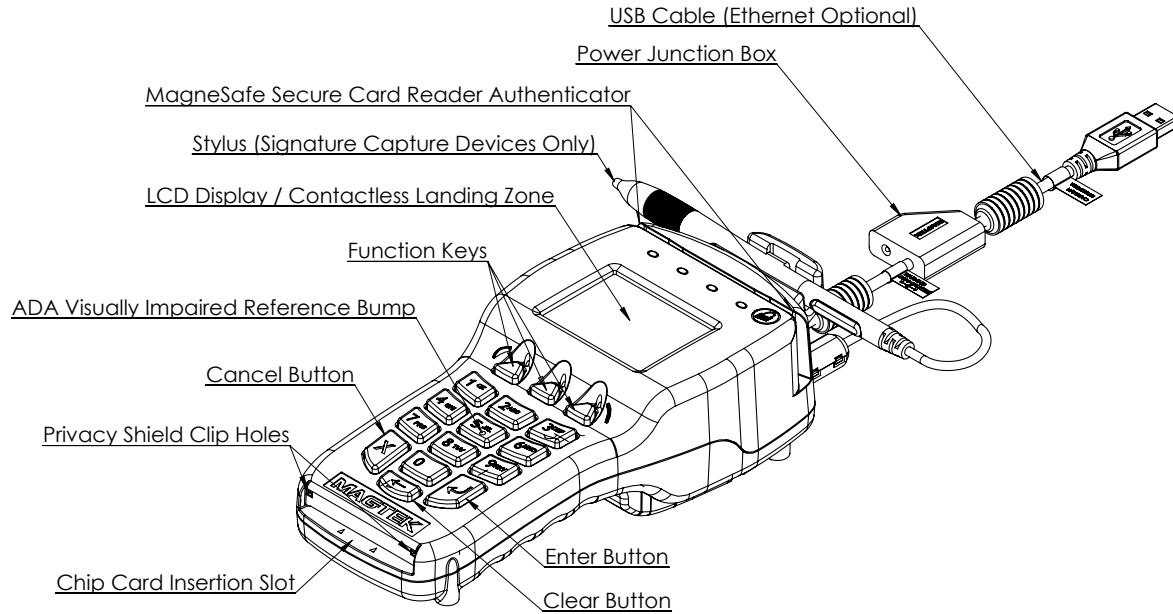
PCI PTS 3.X, SRED



PRIVACY SHIELD
[OPTIONAL]

DynaPro/DynaPro v3 Overview

DynaPro and DynaPro v3 are secure cryptographic devices for PIN and data entry. They protect cardholder data whether it is read using the MagneSafe™ Secure Card Reader Authenticator (SCRA), contact, or contactless chip card reader. The DynaPro family of products is one of the most comprehensive, end-to-end security solutions available.



DynaPro/DynaPro v3 with USB Connection

DynaPro/DynaPro v3 USB Power

DynaPro with USB connection requires an external power supply when NFC capabilities are present.

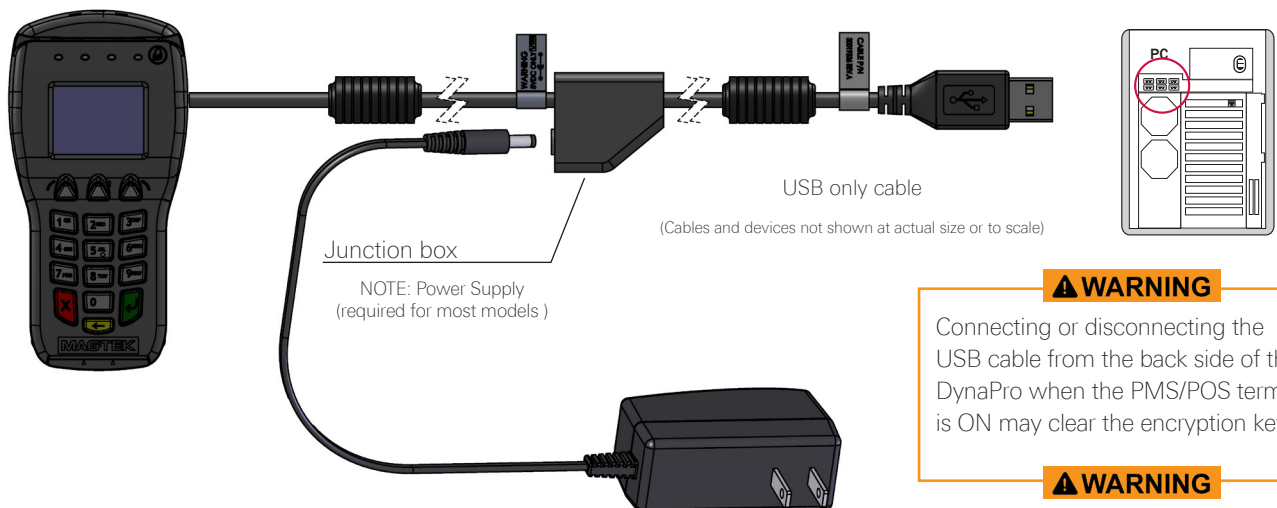


Connecting the MagTek DynaPro/DynaPro v3

DynaPro/DynaPro v3 USB devices need to be connected to the USB port of the PMS/POS terminal being used. The USB cable included with the device has a junction box approximately two feet from the end for an AC adapter. Plug the AC adapter cable into the junction box. Plug the other end of the AC adapter into the nearest available power outlet. Plug the USB end of the cable into an available USB port of the associated PMS/POS terminal being used.

Verify Connection and Power

After the AC adapter is plugged in, DynaPro/DynaPro v3 powers on. Initialization takes approximately 30 seconds. “Welcome” appears on the display screen when ready. Contact MagTek support if the “Welcome” screen does not appear. The PMS/POS host software automatically detects the device.



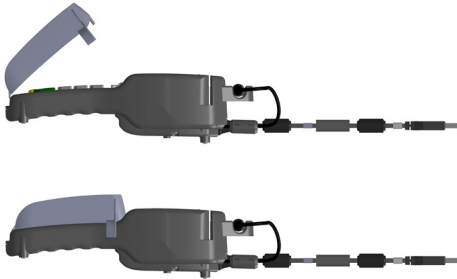
DynaPro/DynaPro v3 Operation

During normal operation, the operator selects the type of transaction from the PMS/POS terminal software. Data is entered on the DynaPro/DynaPro v3 keypad in response to the prompts on the device display.

Options - Privacy Shield | Stylus | NFC

Privacy Shield Installation

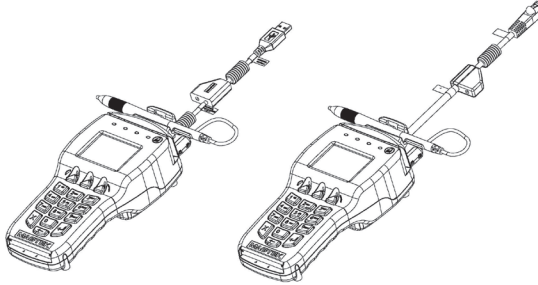
To install the privacy shield, hold the smaller end firmly against the privacy shield clip holes that are above the chip card insertion slot. Then pivot the larger end down and press it onto the device until you feel a click.



Stylus (optional)

Stylus with USB

Stylus with Ethernet



NFC Capabilities

DynaPro/DynaPro v3 offer an optional contactless card reader. Tap contactless cards on the device's display.



DynaPro/DynaPro v3 with Ethernet Connection

DynaPro/DynaPro v3 Ethernet Power

DynaPro/DynaPro v3 with Ethernet connection requires an external power supply.

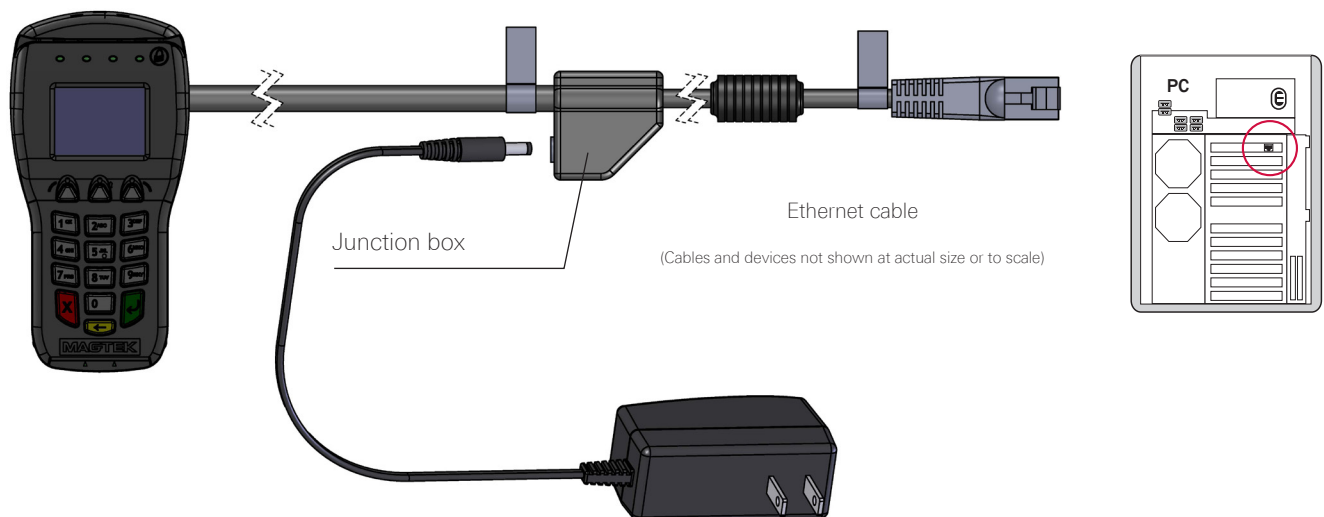


Connecting the MagTek DynaPro/DynaPro v3

The device comes with Ethernet cable part number 30019327. The Ethernet cable included with the device has a junction box approximately two feet from the end for an AC adapter. Plug the AC adapter cable into the junction box. Plug the Ethernet cable into the nearest available network port. Plug the other end of the AC adapter into the nearest available power outlet.

Verify Connection and Power

After the AC adapter is plugged in, DynaPro powers on. Initialization takes approximately 30 seconds. "Welcome" appears on the display screen when ready. Contact MagTek support if the "Welcome" screen does not appear. Check with your host software provider for specific user functionality and network connectivity validation.





PCI PTS 3.X, SRED

Legal Terms and Conditions

PCI SSC's approval applies only to PEDs that are identical to the PED tested by a PCI Security Standards Council recognized laboratory. If any aspect of the PED is different from that which was tested by the laboratory—even if the PED conforms to the basic product description contained in the letter—then the PED model should not be considered approved, nor promoted as approved. For example, if a PED contains firmware, software, or physical construction that has the same name or model number as those tested by the laboratory, but in fact is not identical to those PED samples tested by the laboratory, then the PED should not be considered or promoted as approved.

No vendor or third party may refer to a PED as "PCI Approved," nor otherwise state or imply that PCI SSC has, in whole or part, approved any aspect of a vendor or its PEDs, except to the extent and subject to the terms and restrictions expressly set forth in a written agreement with PCI SSC, or in an approval letter. All other references to PCI SSC's approval are strictly and actively prohibited by PCI SSC.

When granted, an approval is provided by PCI SSC to ensure certain security and operational characteristics important to the achievement of PCI SSC's goals, but the approval does not under any circumstances include any endorsement or warranty regarding the functionality, quality, or performance of any particular product or service. PCI SSC does not warrant any products or services provided by third parties. Approval does not, under any circumstances, include or imply any product warranties from PCI SSC, including, without limitation, any implied warranties of merchantability, fitness for purpose or noninfringement, all of which are expressly disclaimed by PCI SSC. All rights and remedies regarding products and services, which have received an approval, shall be provided by the third party providing such products or services, and not by PCI SSC or the payment brand participants.

DynaPro and DynaPo v3 Part Number Descriptions

DynaPro v3 PN	DynaPro V1 PN	DynaPro Description	Cable	Signature Capture	NFC
30056082	30056001	PCI, NO CTLESS, NO SIGCAP, BLACK, USB 6FT	USB	NO	NO
	30056002	TST, NO CTLESS, NO SIGCAP, BLACK, USB 6FT	USB	NO	NO
30056083	30056003	PCI, NO CTLESS, SIGNATURE CAPTURE, BLACK, USB 6FT	USB	YES	NO
	30056004	TST, NO CTLESS, SIGNATURE CAPTURE, BLACK, USB 6FT	USB	YES	NO
30056070	30056013	PCI, CONTACTLESS, NO SIGCAP, BLACK, USB 6FT	USB	NO	YES
	30056014	TST, CONTACTLESS, NO SIGCAP, BLACK, USB 6FT	USB	NO	YES
30056072	30056028	PCI, CONTACTLESS, SIGNATURE CAPTURE, BLACK, USB 6FT	USB	YES	YES
	30056029	TST, CONTACTLESS, SIGNATURE CAPTURE, BLACK, USB 6FT	USB	YES	YES
30056084	30056005	PCI, NO CTLESS, NO SIGCAP, BLACK, ETHERNET 6FT	ETHERNET	NO	NO
	30056006	TST, NO CTLESS, NO SIGCAP, BLACK, ETHERNET 6.75FT	ETHERNET	NO	NO
	30056007	PCI, NO CTLESS, SIGNATURE CAPTURE, BLACK, ETHERNET 6.75FT	ETHERNET	YES	NO
	30056008	TST, NO CTLESS, SIGNATURE CAPTURE, BLACK, ETHERNET 6.75FT	ETHERNET	YES	NO
	30056030	PCI, CONTACTLESS, SIGNATURE CAPTURE, BLACK, ETHERNET 6.75FT	ETHERNET	YES	YES
	30056031	TST, CONTACTLESS, SIGNATURE CAPTURE, BLACK, ETHERNET 6.75FT	ETHERNET	YES	YES

TST devices are for development, and use test keys.

NOTICE

Subjecting the device to temperature extremes (above 60°C or below -10°C) can adversely affect the device's battery life and tamper security switches, which can render the device inoperable and void the warranty. Operating temperature: 0°C to 45°C.

System Requirements

- Windows 7 or later (32-bit or 64-bit)
- Microsoft .NET Framework version 2.0 (Not required but suggested)
- USB port or Ethernet port
- Power source within 6' if using contactless functions or Ethernet

