

Product List

- Magnetic Stripe, Manual Insert Readers, USB Connection
 - MT-215
 - P-Series
 - HalfCard
- Magnetic Stripe, Manual Swipe, Rails
 - 43mm
 - 90mm
 - 100mm

OEM Legacy Manual - MSR Insertion and Swipe Magnetic Stripe Card Readers

MagTek understands that development time is expensive, and that “time to market” is critical. That is why MagTek uses a consultative approach when working with original equipment manufacturer developers and designers. MagTek understands that the products and solutions created are only done through good working relationships coupled with premier hardware, accessible application programming interfaces and software developer kits that make sense. Using a consultative approach, MagTek’s OEM team will work with you to develop a solution that best fits your needs.

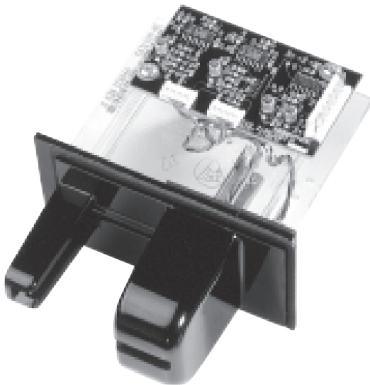
CALL - 562.546.6400 | EMAIL - oem.solutions@magtek.com

Insertion Readers



MT-215

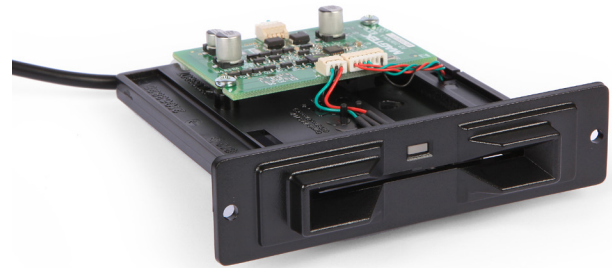
The USB (Universal Serial Bus) HID (Human Interface Device) Insertion Reader is a compact magnetic stripe card reader, which conforms to ISO standards. The Reader is compatible with any device with a host USB interface. The reader can have single or dual head configurations. The dual head configuration can read a card with the magnetic stripe orientated in two directions. The single head configuration can read a card with the magnetic stripe orientated in one direction. A card is read by inserting it into and/or removing it out of the card slot when the card's magnetic stripe contacts a read head.



P Series

USB: The P-Series USB (Universal Serial Bus) Insertion Reader is a compact magnetic stripe card reader, which conforms to ISO standards. The Reader is compatible with the PC series of personal computers or any device with a USB interface. The reader can have single or dual head configurations. The dual head configuration can read a card with the magnetic stripe orientated in two directions. The single head configuration

can read a card with the magnetic stripe orientated in one direction. A card is read by inserting it into and/or removing it out of the card slot when the card is oriented such that the card's magnetic stripe contacts a read head. Sealed Chassis design - provides superior protection from moisture. Isolated PCB - isolates electronics from debris and liquids.

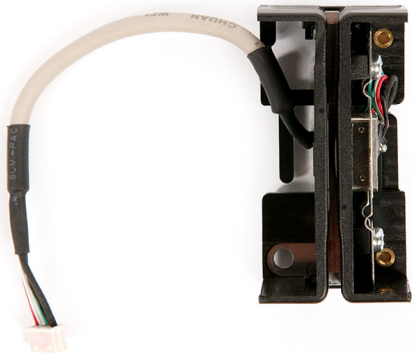


HalfCard

USB: The Half Card USB (Universal Serial Bus) Insertion Reader is a compact single-head, dual-track (Tracks 1 and 2) magnetic stripe card reader, which conforms to ISO standards. The magnetic stripe is down and to the right as viewed from the front of the Reader. The single head configuration can read the card on insertion and removal.



Manual Readers



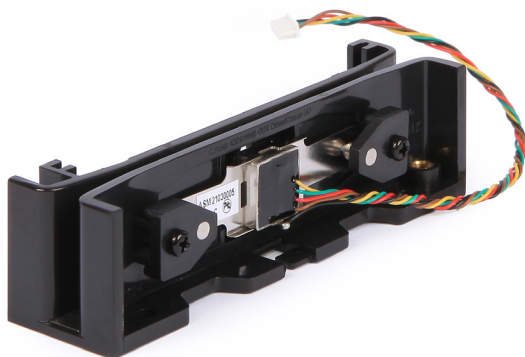
43MM

The 43-millimeter OEM Swipe Reader has a TTL level interface and is designed for use in retail, access control, and time and attendance environments. This Reader is in compliance with industry specifications, including ANSI/ISO Standards 7810, 7811-1 through -6, 7812, and 7813. The Reader can be customized. Bidirectional read capability is available.



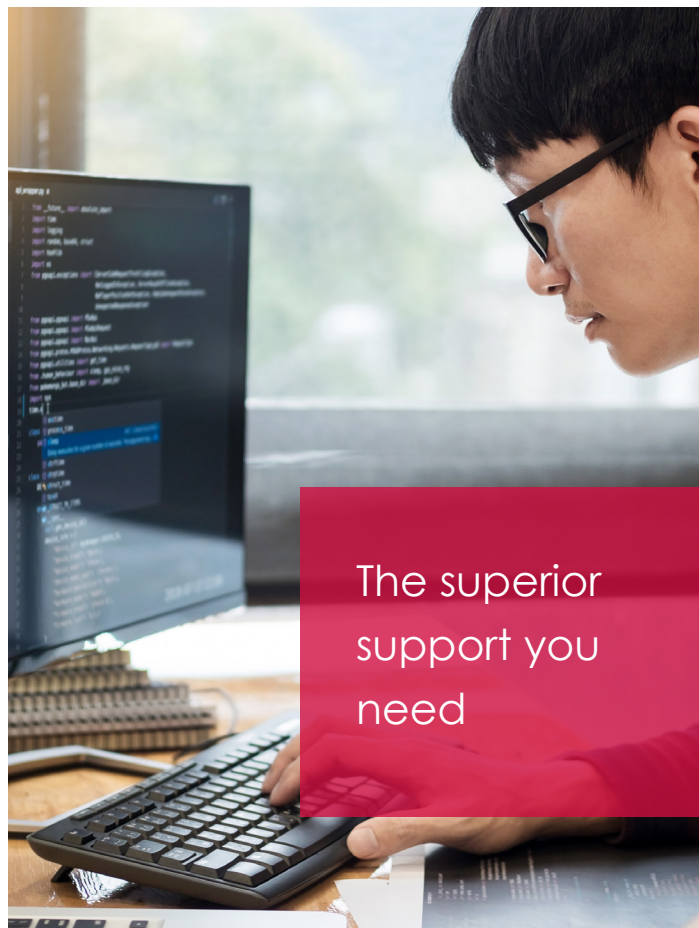
100mm

The 100-millimeter OEM Swipe Reader has a TTL level interface and is designed for use in retail, access control, and time and attendance environments. This Reader is in compliance with industry specifications, including ANSI/ISO Standards 7810, 7811-1 through -6, 7812, 7813, and AAMVA. The Reader can be customized. Bidirectional read capability is available.



90mm

The 90-millimeter OEM Swipe Reader has a TTL level interface and is designed for use in retail, access control, and time and attendance environments. This Reader is in compliance with industry specifications, including ANSI/ISO Standards 7810, 7811-1 through -6, 7812, 7813, and AAMVA. The Reader can be customized. Bidirectional read capability is available.



The superior
support you
need

Insertion Readers

Magnetic Stripe, Manual Insert Readers, USB Connection

	MT-215	P-Series	Half-card
Interface	USB	USB - Clock and data interface	USB - HID
Read capability	ISO 7810 and ISO 7811 and AAMVA ISO Single or Dual	Water-tight meets UL50 requirements ISO 7810 and ISO 7811 and AAMVA ISO Single or Dual Optional dual heads	ISO 7810 and ISO 7811
Card Speed	3 to 60 ips (7.62 to 152.4 cm/s)	3 to 50 ips (7.62 to 127 cm/sec)	3 to 60 ips (7.62 to 152.4 cm/s)
Power Requirements	5V from USB port Port powered	+5VDC \pm 10%	5V from USB port; 35 ma
Life	1,000,000 passes (500,000 Insertion Cycles) minimum	Head: 1,000,000 passes (500,000 insertions)	500,000 Insertion Cycles (1,000,000 head passes)
Dimensions	Without bezel With Flat-faced Bezel L: 4.4" (111.76 mm) 4.58" (116.33 mm) W: 3.51" (89.15 mm) 4.00" (101.60 mm) H: 1.24" (31.50 mm) 3.00" (76.2 mm)	Without Bezel With Extended Arm Bezel: L: 4.08 in. (103.6mm) 4.82 in. (122.4mm) W: 3.15 in. (80.0mm) 3.54 in. (90.0mm) H: 1.29 in. (32.8mm) 1.81 in. (46.0mm)	Length: 3.86 in (98.0 mm) – Plus USB Width: 4.00 in (101.6 mm) Height: 1.00 in (25.4 mm)
Cable Length	Cables not supplied.	Optional 6-foot Black or Pearl White cable	optional 6ft.
Temperature	Operating: -40 oC to 70 oC (-40 oF to 158 oF) Storage: -40 oC to 80 oC (-40 oF to 176 oF)	Operating: -22°F to 140°F (-30°C to 60°C) Storage: -22°F to 158°F (-30°C to 70°C)	Operating: -40 o to 70o C (-40 o to 158 o F) Storage: -40 o to 80 o C (-40 o to 176 o F)
Humidity	Operating: 10% to 90% noncondensing Storage: 10% to 90% noncondensing	Operating: 10% to 90% noncondensing Storage: Up to 100% noncondensing	Operating: 10% to 90% noncondensing Storage: 10% to 90% noncondensing

Magnetic Stripe, Manual Swipe, Rails

	43mm	90mm	100mm
Interface	clock and data	clock and data	clock and data
Read capability	bi-directional, ISO, AAMVA ISO 7810, 7811	bi-directional, ISO, AAMVA ISO 7810, 7811	bi-directional, ISO, AAMVA ISO 7810, 7811
Card Speed	Card speed through the unit may vary from: 2-125 ips @ 75 bpi 2-60 ips @ 210 bpi	Card speed through the unit may vary from: 2-125 ips @ 75 bpi 2-60 ips @ 210 bpi	Card speed through the unit may vary from: 2-125 ips @ 75 bpi 2-60 ips @ 210 bpi
Power Require-ments	Single track: 2.4 to 5.5VDC @ 1mA, typical Dual track: 2.4 to 5.5VDC @ 2mA, typical	Single Track: 2.4 to 5.5VDC @ 1mA, typical Dual Track: 2.4 to 5.5VDC @ 2mA, typical Three Tracks: 2.4 to 5.5VDC @ 3mA, typical	Single Track: 2.4 to 5.5VDC @ 1mA, typical Dual Track: 2.4 to 5.5VDC @ 2mA, typical Three Tracks: 2.4 to 5.5VDC @ 3mA, typical
Life	300,000 passes Single Track 1,000,000 passes Dual Track	300,000 passes Single Track 1,000,000 passes Multi-Track	300,000 passes Single Track 1,000,000 passes Multi-Track
Dimensions	Length: 1.693 in. (43,0mm) Height: 0.902 in. (22,9mm) Width: 0.866 in. (22,0mm)	Length: 3.54 in. (90,0mm) Height: 0.95 in. (24,13mm) Width: 0.88 in. (22,4mm)	Length: 3.94 in. (100,0mm) Height: 1.23 in. (31,3mm) Width: 1.28 in. (32,5mm)
Cable Length	3.386 in. (86mm)	Single Track: 6.00 in. (150,0mm) Dual Track: 4.00 in. (101,6mm) Three Tracks: 5.00 in. (127,0mm)	Single Track: 12.00 in. (305,0mm) Dual Track: 21.00 in. (533,0mm) Three Tracks: 20.00 in. (508,0mm)
Temperature	Operating: -22°F to 158°F (-30°C to 70°C) Storage: -40°F to 176°F (-40°C to 80°C)	Operating: -22°F to 158°F (-30°C to 70°C) Storage: -40°F to 176°F (-40°C to 80°C)	Operating: -22°F to 158°F (-30°C to 70°C) Storage: -40°F to 176°F (-40°C to 80°C)
Humidity	Operating: 10% to 90% noncondensing Storage: Up to 100% noncondensing	Operating: 10% to 90% noncondensing Storage: Up to 100% noncondensing	Operating: 10% to 90% noncondensing Storage: Up to 100% noncondensing