

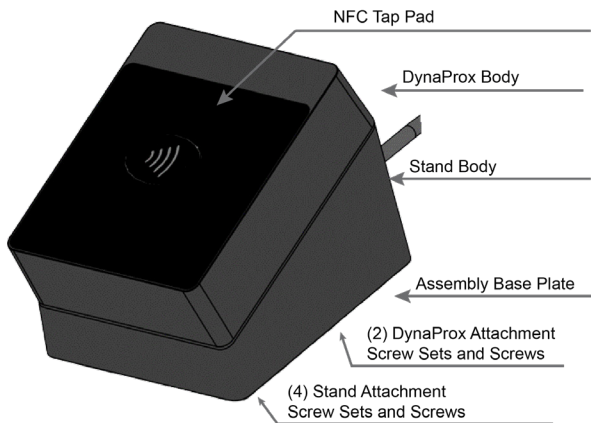
## Quick Installation Guide

### Assembly

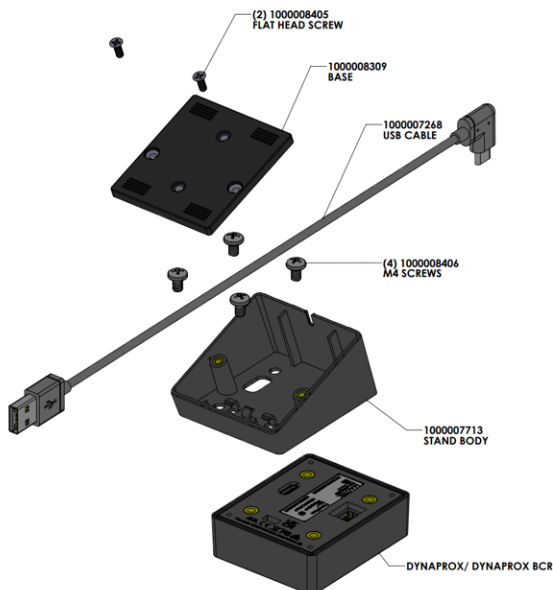
#### Overview

DynaProx and DynaProx BCR [DynaProx products] deliver the next generation in contactless payment acceptance. Both models come standard with contactless EMV and near field communication (NFC) technology. DynaProx products can be purchased with either a gasket for stable installation or with a countertop, angled stand for stable acceptance.

#### Major Components



DynaProx (shown here) Major Components - Assembled to Stand



DynaProx (shown here) Major Components - Upside Down Blow Out

#### Stand Contents:

**Stand Body:** The body of the stand. Angled for better ergonomics.

**Cable Channel:** Allows the cable to be channeled out the back of the stand body.

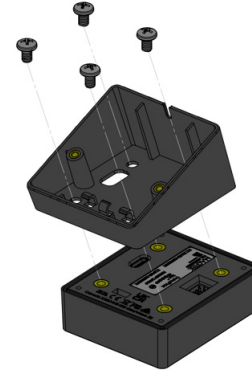
**(4) M4 Screws:** Attaches the stand body to the DynaProx device

**(2) Flat-head Screws:** Attaches the base plate to the stand body.

**Base Plate:** Bottom of stand, can attach the stand to counter tops.

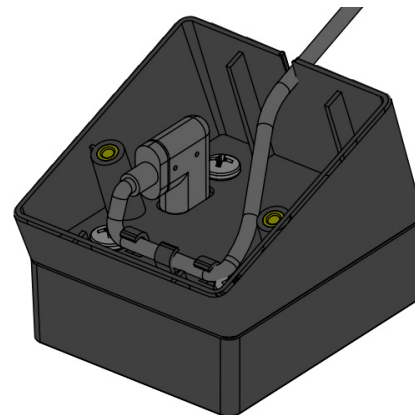
#### Installation of Stand

1. Place the DynaProx product face down on a clean soft surface to avoid scratching the front face of the device. Using minimal torque, use (4) M4 screws to attach the stand to the body.

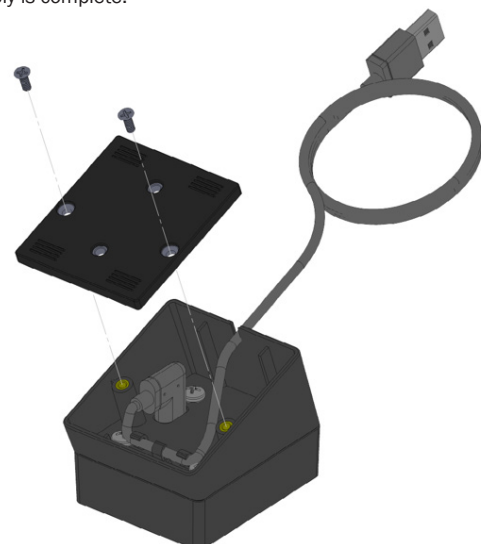


2. Insert the cable and connect securely to the DynaProx product. Clip the cable securely into the cable management hooks. Channel the cable outside the back end of the stand body.

3. Align the assembly base plate and using the (2) flat-head screws, screw the base plate to the stand body.



4. Assembly is complete.

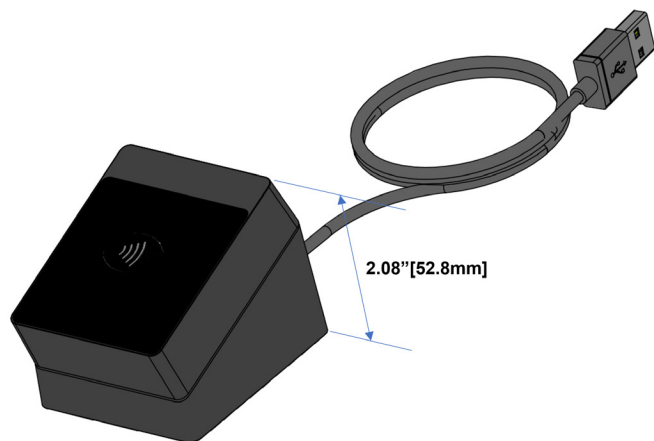


## Assembly (continued), Installation, and Disassembly

Additionally, you can secure the base plate to almost any surface using (2) additional screws, not included.

### Dimensions

Ensure to provide ample space for easy access.

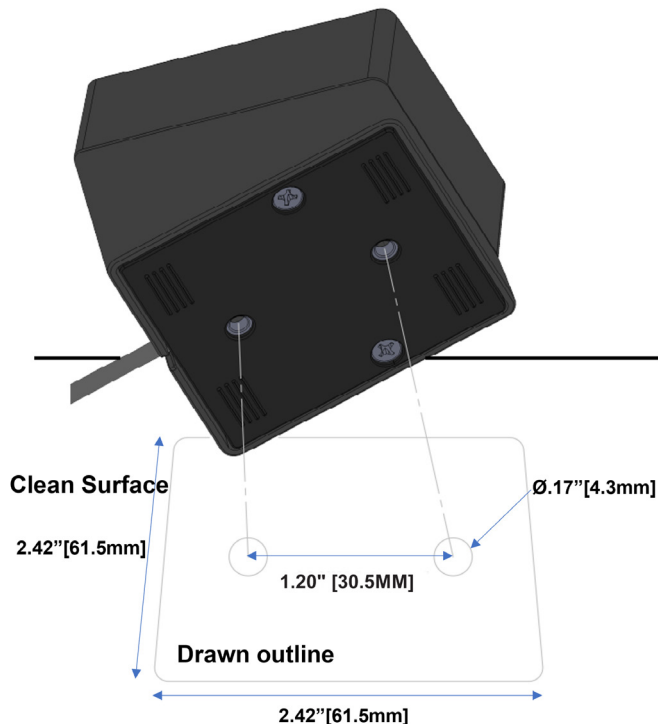


PN	Description
21078012	KIT, STAND, COUNTERTOP, DYNAPROX

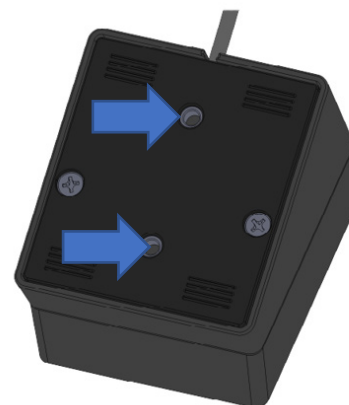
### Securing DynaProx Stand to Surface

Follow Steps 1 through 2, then -

a. Place baseplate on the location where you want to secure the device. Trace the baseplate and mark the two screw set locations (Drawn Outline). Remove the baseplate and drill down through the surface, checking to make certain everything is clear beneath.



b. Attach the baseplate to the stand body following step 3. Then align on the surface to the tracing.



c. Using (2) M4 x 0.7mm thread pitch (not included) screws, screw up through the pre-drilled holes to the baseplate. Screws should be long enough to go through the surface and no more than 0.25 inches into the stand body.

### Disassembly

Repeat assembly in reverse order to remove device from counter installation and stand.

#### EU STATEMENT

Hereby, MagTek Inc. declares that the radio equipment types Wideband Transmission System (802.11 wireless and Bluetooth Low Energy), and Non-Specific Short Range Device (contactless) are in compliance with Directive 2014/53/EU. The full text of the EU declarations of conformity is available at the following internet address:

<https://www.magtek.com/Content/DocumentationFiles/D998200505.pdf>

#### UKCA STANDARDS

Hereby, MagTek Inc. declares that the radio equipment types Wideband Transmission System (Wireless LAN and Bluetooth Low Energy), and Non-Specific Short Range Device (contactless) are in compliance with Radio Equipment Regulations 2017 Directive S.I.2017:1206. The full text of the UKCA declarations of conformity is available at the following Internet addresses:

<https://www.magtek.com/Content/DocumentationFiles/D998200506.pdf>

