

Banking Solutions: PIN Selection

Card Issuance and PIN Management Host-based or card-based offsets

QwickCards.com card issuance solution can increase card sales and revenue while decreasing costs and lead times. Cardholders no longer need to wait to get their cards in the mail or try to remember a computer generated PIN. Consumer selected PINs are easier to remember and therefore used more often, increasing card usage and brand loyalty.

PIN SELECTION

All Card/PAN and PIN data is instantly encrypted.





PAN can be entered at new account desk or pulled directly from host via a custom interface.

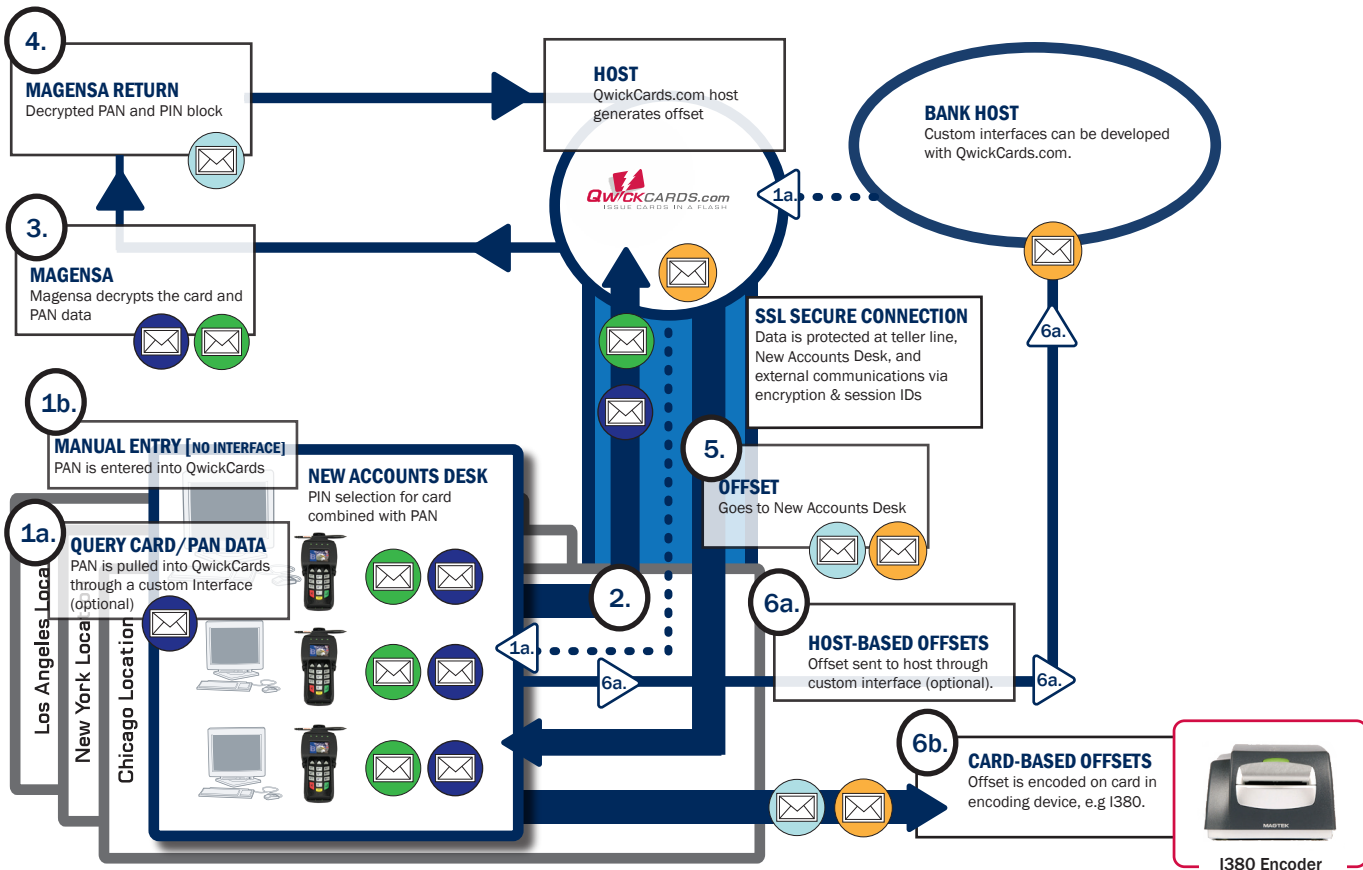
PIN is entered into DynaPro key pad twice for confirmation.

DynaPro comes standard as a PIN entry device with a secure card reader authenticator (SCRA), EMV contact/contactless, encrypting PIN pad, color display, programmable function buttons, and a USB 2.0 interface. Optional features include: NFC contactless card reader, signature capture, privacy shield, and Ethernet interface.



Topology Key

-  Encrypted PIN Data
-  Encrypted Card/PAN Data
-  Decrypted PAN
-  PIN Block/Offset



Banking Solutions: rePIN Selection

Card Issuance and PIN Management Host-based or card-based offsets

QuickCards.com works for instant rePINning by delivering the necessary components you need today, and remains versatile enough to work with new programs in the future. Whether the PIN offsets are host-based or card-based, your consumers will be able to select a personally created (and easier to remember) PIN, with or without having to know the previous PIN, giving them a card and PIN that they can use immediately.

rePIN SELECTION

All Card/PAN and PIN data is instantly encrypted.

Card is swiped in SCRA. Card data is sent to Magensa for card authentication or registration.

PIN is entered into DynaPro key pad twice for confirmation.

DynaPro comes standard as a PIN entry device with a secure card reader authenticator (SCRA), EMV contact/contactless, encrypting PIN pad, color display, programmable function buttons, and a USB 2.0 interface. Optional features include: NFC contactless card reader, signature capture, privacy shield, and Ethernet interface.



Topology Key

- Encrypted PIN Data
- Encrypted Card/PAN Data
- Decrypted PAN
- PIN Block/Offset
- Transaction Mangeprint
- MagnePrint Score

