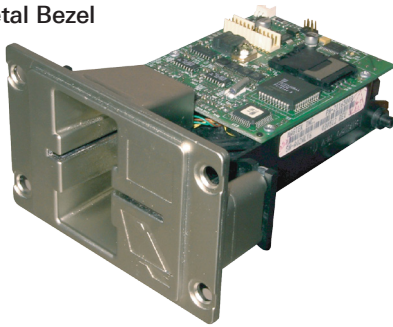




MagTek Insertion-65 IntelliStripe I-65 Insertion Reader

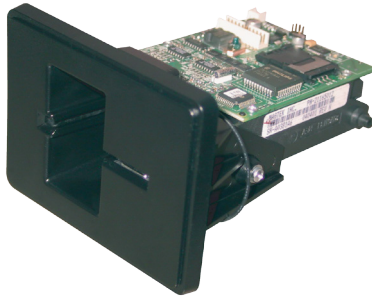
I-65 Metal Bezel



The IntelliStripe 65™ Insertion Reader communicates to a host using an RS-232 or USB interface with a defined protocol and command set. The 3-track Reader has an industry standard mechanical footprint. The IntelliStripe 65 is designed for self-service applications such as pay telephones, vending machines, kiosks, value-load machines and fuel pumps and performs the following major functions:

- Reads magnetic stripe cards
- Communicates with ISO smart cards and many popular memory cards
- Supports one on-board SAM (Security Access Module)
- Includes an integrated USB interface
- Optionally supports Contactless Smart Card communication

I-65 Plastic Bezel



Applications for Unattended Transactions

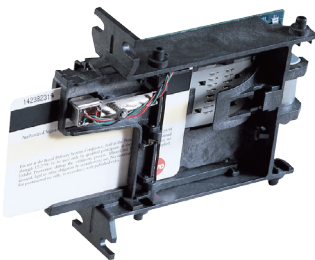
Integrates a magnetic card reader and smart card reader in a modular and compact design. Includes robust smart card contacts designed for 500,000 insertions. Incorporates a rugged and corrosion-resistant design with durable plastics, ideal for outdoor environments.

Card Support

Reads up to three tracks of ISO compatible magnetic card data. Delivers the highest read accuracy and reliability in the industry.

- Supports ISO 7816-3 (1997) T=0 and T=1 microprocessor cards. Also supports many popular memory cards.
- Smart Card Support. EMV 4.0 Level 1 approved 8 smart card contacts designed for 500,000 insertions.

I-65 No Bezel



Vandal and Fraud Protection

Vandal resistant chassis incorporates coin and "half-card" dropout clearance. Optional security gate protects against debris insertion and the environment.



Call a representative to learn more 562-546-6400.

Specifications

Mechanical

- Optional card latch lock with automatic latch/lock release system if power fails.
- Multiple mounting options for easy mechanical integration.
- Available with multiple options for plastic bezels or an optional metal bezel.
- Intelligent, command driven RS-232 and USB interface.
- Supports high speed smart card interface with transfer data rates up to 115 Kbps

Integrated Security

Single socket on-board Security Access Module (SAM). Optional Contactless Interface. Mifare, Mastercard PayPass, Visa PayWave, and AMEX Expresspay.

Part Number	Description
21165042	North American Plastic Bezel
21165043	No security gate; no latch; North American Plastic Bezel
21165044	Contactless smart card ready*; International Plastic Bezel
21165046	Same as 21165044 but with Contactless smart card module and antenna installed
21165047	Contactless smart card ready*; no bezel (front and side mounting configuration—suitable for metal bezel)
21165048	International Plastic Bezel
21165051	No latch (but motor is supplied for tamper protection); no bezel (front and side mounting configuration—suitable for metal bezel)
21165052	No gate; no latch, no bezel (front and side mounting configuration—suitable for metal bezel)
21165053	No bezel (front and side mounting configuration—suitable for metal bezel)
21165055	Side mounting, MagnePrint, Bezel with LED
21165056	Single 3-track head with ground lug; North American Plastic Bezel
21165058	Contactless smart card ready*; North American Plastic Bezel
21165059	Same as 21165048 but without latch
21165062	Same as 21165053 but with 10" ground wire and lug on head frame
21165063	Same as 21165052 but with 6" ground wire and lug on head frame
21165064	Same as 21165043 but with 6" ground wire and lug on head frame
21165065	Same as 21165051 but with Card Present switch installed
21165067	No latch, no bezel (front and side mounting configuration—suitable for metal bezel)
21165068	Same as 21165046 but with SAM socket on Contactless Module
21165069	Same as 21165056 but with metal bezel
21165070	Encrypting IntelliHead, International Plastic Bezel
21165071	Same as 21165070 but with Contactless smart card module and antenna
21165078	Same as 21165053 but Contactless smart card ready*

*Contactless module is included but antenna and cable must be ordered separately

OPERATING	
Reader Configuration	Data Format Specification*
Mag-Stripe Functions Track 1,2,3 only	ISO/AAMVA/ JIS formats ISO 7810, 7811, JIS x 6302 Type 2
Smartcard Functions	ISO 7816 T=0 and T=1 protocols, many popular memory cards EMVCo Level 1 Approval
* ISO (International Standards Organization), AAMVA, (American Association of Motor Vehicle Administrators), JIS (Japanese Industrial Standard)	
Recording method	Two-frequency coherent phase (F2F)
Card Speed	3 IPS (7,62 cm/sec) to 50 IPS (127, cm/sec)
MTBF	
Head	500,000 passes (500,000 insertion cycles)
SC Contacts	500,000 insertions
Input Voltage	12.0VDC +/-5%
Current	500mA max, (1A with contactless smartcard option) 50mA idle, (300mA with contactless smartcard option)
Bezel Options	None, Plastic, Metal
Chassis Mounting Options	Front Flange Side Mounting Studs Side Mounting Holes
ENVIRONMENTAL	
Temperature	
Operating	-4°F to 122°F (-20° C to 50°C) (w/o contactless smartcard option) -4°F to 122°F (-20° C to 50°C) (with contactless smartcard option)
Storage	-4°F to 158°F (-20°C to 70°C)
Humidity	
Operating	10% to 90% noncondensing
Storage	10% to 90% noncondensing
Altitude	
Operating	0-10,000 ft. (0-3,048 m)
Storage	0-50,000 ft. (0-15,240 m)
DIMENSIONS	
Core chassis	Height: 1.4 in (35,6 mm) Width: 2.6 in (66 mm) (without mounting bosses or flanges) Length: 4.7 in (119,4 mm) Mounting Depth: 3.8 in (96,5 mm) (when mounted with front flanges)