



Check Readers

Small Document Scanners

MICR and Magstripe data

Check Readers



Excella STX

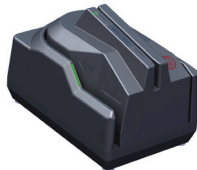
Dual-sided scanner with rear side endorsement printer, front side franking on most models, and integrated secure card reader authenticator

Retailers rely on MagTek. Millions of check transactions every day are processed with MagTek check readers and scanners. For some of the industry's biggest retailers to the smallest mom and pop shops, MagTek check readers and scanners deliver flexibility, accuracy and value. With solutions for both auto-and single-feed operation and advanced features including integrated, secure card reader authenticators and color scanning, MagTek check readers and scanners fit the needs of a wide range of check transaction applications. For check processing that's easy and secure, put your trust in MagTek.



ImageSafe

Dual-sided scanner with integrated secure card reader authenticator



MICR Safe

Encrypting check scanner
Single-sided scanner with integrated secure card reader authenticator

Testimonial

"We have worked with several brands of scanners over the years and found that MagTek is the best. The MagTek scanners are well designed, durable and reliable. Their developer tools, such as their API's that control the scanner, make it easy to integrate into our software application. I highly recommend MagTek."

- Jeff Hardy, CEO,
TOPS Software LLC.
Product: Excella STX



Call a representative to learn more: 562-546-6400.



Conventional MICR with SCRA

Excella STX

Excella STX is check reading made easy. For merchants and financial institutions that need an affordable method for rapid image capture at the earliest entry point when processing BOC, Check 21 and remote deposit capture transactions. The Excella STX leads the industry in reliability and ease-of-use. Featuring a front and back printer for franking and endorsing, Excella STX scans front and back images in a quick, single pass. The small footprint unit also offers single-side scanning for standard ID cards and offers an optional color scanning feature.



The full-featured Excella STX is a single-feed check reader and scanner designed to meet the dynamic requirements of many retail and financial applications. The duplex reader offers MICR reading for E13B and CMC7 fonts and connects to standard PCs and terminals through a USB or Ethernet 100 Base-T interface. The unit also features easy access to check path and scan bars to simplify maintenance and cleaning. With an integrated MagneSafe secure card reader authenticator; this device may be everything your application needs for secure payment processing.

ImageSafe

The multi-purpose ImageSafe is a compact check reader and dual-sided scanner that offers a cost-effective alternative to implement PC-based electronic check applications. Ideal for use with Check 21, BOC, and remote deposit capture applications. ImageSafe also offers virtual endorsement capability for internal controls. It enables the double-sided capture of complete check images in a single pass and supports E13B and CMC7 fonts.

ImageSafe also enables secure card-based payment transactions with its integrated MagneSafe® secure card reader authenticator that encrypts card data at the point of swipe. Using the MagneSafe secure card reader authenticator, users can easily secure credit, debit, and gift card transactions in addition to capturing check images; and can also be used with an ID card for strong two-factor authentication during online financial transactions.

The USB connection makes it easy to plug-and-play with the MagTek ImageSafe device. ImageSafe connects to PCs and terminals through a USB 2.0 or 1.1 interface and features an easy-to-read LED indicator for visibility into device status. The LED indicator on the ImageSafe scanner will signal that the device is ready.



Encrypting MICR with SCRA

MICRSafe

Optimized to reduce transaction time and manual entry errors, the MICRSafe is a single-feed MICR reader with a reliable and durable design. Ideal for retail applications where fast and accurate MICR reading is required, the MICRSafe offers a range of interface options, including connectivity to the most popular POS terminals. With a simple drop-and-push check feed movement, the MICRSafe significantly speeds check verification and conversion.



Enhanced User Experience

The MICRSafe enables retailers to easily format the MICR data to match any application input requirements. In a single pass, the MICRSafe reads E13B and CMC7 MICR fonts and connects to POS terminals through RS-232 AUX interface to output data.

Designed for multi-use retail environments, the MICRSafe also offers an integrated 3-track MagneSafe® secure card reader authenticator to read ISO and AAMVA standard credit and debit cards and ID cards. This highly dependable device will deliver superior performance throughout years of daily use.

Security

In a single pass, this encrypting check scanner encrypts the magnetic MICR data and verifies the magnetic composition.

MagTek secure card reader authenticators (SCRAs) use the MagneSafe Security Architecture (MSA). The MSA has evolved exponentially from its inception in 2006 when it delivered the industry's first SCRAs for secure electronic transactions. The MSA is a digital identification and authentication architecture that safeguards personal data. Designed to exceed PCI regulations, MSA leverages strong encryption, secure tokenization, counterfeit detection, tamper recognition, data relevance and integrity, and dynamic digital transaction signatures, which together validate and protect the entire transaction and each of its components.

A key feature of the MSA is MagnePrint card authentication, a patented, proven technology which reliably identifies counterfeit credit cards, debit cards, gift cards, ATM cards and ID cards at the point of swipe, before fraud occurs. MSA's multi-layer security provides unmatched protection and flexibility for safer online transactions.





Specifications

	Conventional MICR with SCRA		Encrypting MICR and SCRA
	ImageSafe	Excella STX	MICRSafe
IMAGING			
MICR ENCRYPTION	NO	NO	YES
MAGSTRIPE READER	SCRA 3TK	SCRA 3TK	SCRA 3TK
PRINTER	NONE <small>(virtual endorsement for internal controls)</small>	BACK Printing on all models, FRONT franking on most models	NO
SCANNER	DUAL SIDED	DUAL SIDED	MICR Reader
IMAGE RENDITION	TIFF 6.0 JFIF with EXIF tags BMP		NA
IMAGE COMPRESSION	CCITT G4 or JPEG		NA
IMAGE RESOLUTION	200 dpi; black/white and grayscale images	200 dpi; black/white and grayscale images; color optional	NA
CHECK CAPACITY	SINGLE FEED	SINGLE FEED	SINGLE FEED
USES	Check 21; BOC; RDC		
SPECIFICATIONS			
MTBF			
ELECTRONICS	125,000 hrs		
CHECK READ HEAD	1 MILLION PASSES		
MSR READ HEAD	1 MILLION PASSES		
DOCUMENT SIZE	4"x 9" Maximum 3"x 2.625" Minimum	4"x 8.5" Maximum	
MICR FONTS	E13-B and CMC-7	E13-B and CMC-7	E13-B and CMC-7
INTERFACE	USB 2.0; USB 1.1	USB 2.0; Ethernet 100 Base-T	USB; USB KB, RS232 Aux
CURRENT	300 mA; 1.5 A Max		600mA (Operating)
VOLTAGE	12 VDC, 1.5 Amps	24 VDC, 2.5 Amps	12 VDC, 1.5 Amps
MECHANICAL			
DIMENSIONS	Height: 6.0 in Width: 3.9 in Length: 8.1 in	Height: 6.3 in Width: 6.3 in Length: 9.4 in	Height: 4.25 in Width: 4.0 in Length: 6.25 in
WEIGHT	2.2 lbs	4.3 lbs	3.0 lbs
ENVIRONMENTAL			
TEMPERATURE	Operating: 0°C to 50°C (32°F to 122°F) Storage: -30°C to 60°C (-22°F to 140°F)		
HUMIDITY	Operating: 10% to 90% noncondensing Storage: Up to 95% noncondensing		
ALTITUDE	Operating: 0 - 10,000 ft (0 - 3,048m) Storage: 0 - 50,000 ft (0 - 15,240m)		